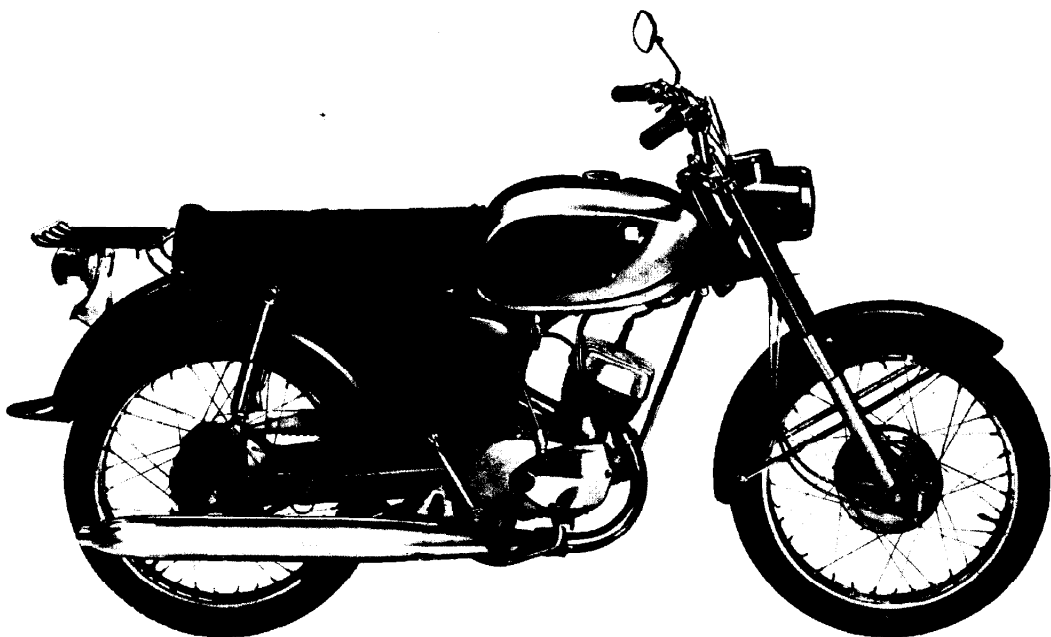




*BRIDGESTONE*  
**90-100 SERIES**  
**ALL MODELS**



**PARTS CATALOGUE**

**FOX CORPORATION**

1111 W. Racine Street, Janesville, WI 53545  
(606) 752-9441

## PREFACE

### **Instructions for using this parts catalogue**

- 1. This parts catalogue covers all parts and service tools for Bridgestone 90cc and 100cc models including oil injection.**
- 2. Please note the following when ordering parts:**
  - A. Be sure to state the part number and description accurately when ordering.**
  - B. Always state color or painted parts-. The part number will include a suffix for color Identification:  
(-OB=Black) (-MB=Blue) (-FAR=Red)**
  - C. Dimensions of parts are listed in millimeter sizes. (MM)**
  - D. L or R in the description indicates that the part is for LEFT or RIGHT side of the cycle.**
  - E. Be sure to refer to the model column to obtain the correct part number of a specific part for each model. In some cases a part may be used on all models. In other cases there may be a different part for each model.**

**ROCKFORD MOTORS, INC.  
ROCKFORD, ILLINOIS**

# CONTENTS

## ENGINE GROUP

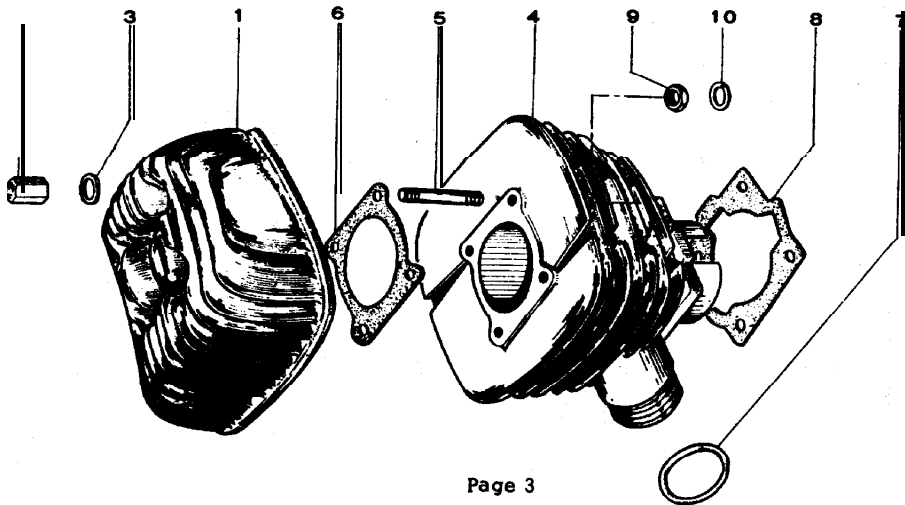
<u>INDEX NO.</u>	<u>DESCRIPTION</u>	<u>PAGE</u>
1.	Cylinder - cylinder head	3
2.	Crankshaft - piston - rotary valve	4-5
3.	Carburetor	6-7-8
4.	Flywheel magneto - ignition coil	9
5.	Crankcase A	<b>10</b>
6.	Crankcase B	11
7.	Transmission case	12-13
8.	Magneto case	14
9.	Oil pump	15
10.	Clutch	16-17
11.	Transmission	18-19
12.	Gear change - shift drum - change pedal	20-21
13.	<b>Kick shaft</b> - kick pedal	22-23

## FRAME GROUP

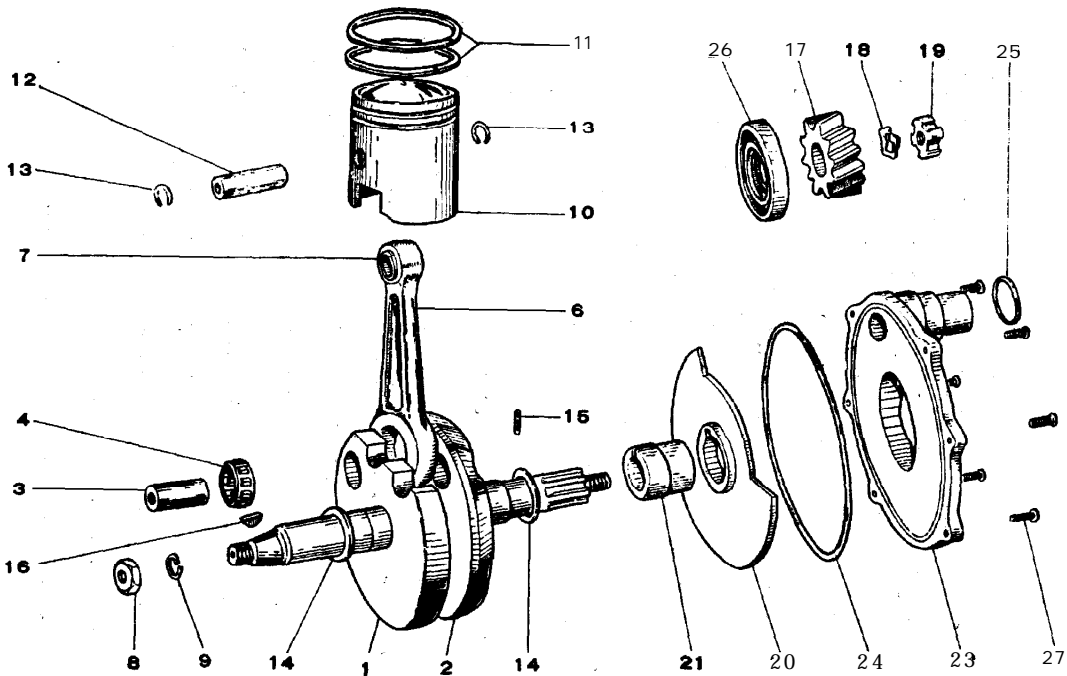
14.	Stamped steel frame	24-25
15.	Pipe frame 100 T	26-27
16.	Telescopic front fork	28-29
17.	Front mudguard	30-31
18.	Rear frame - chain case - suspension	32-33
19.	Fuel tank - fuel cock - oil tank	34-35
20.	C l u t c h   g r i p	36
21.	Throttle grip	37
22.	Head cover - handle bar	38
23.	Speedometer - cables	39
24.	Brake pedal - stand - footrest - side stand	40-4 1
25.	Air cleaner	42-43
26.	Muffler - exhaust pipe	44-45
27.	Tandem seat - side covers	46-47
28.	Front wheel	48-49
29.	Rear wheel	<b>50-5 1</b>
30.	Headlight - main switch - wire harness - battery	52-53
31.	Taillight	54-5 5
32.	Service tools	56
33.	Special tools	57
	<b>BS/100 Racer Parts</b>	<b>58</b>
	Model Identification Reference	59

1) CYLINDER - CYLINDER HEAD

INDEX N C ? .	PART NO .	DESCRIPTION	90cc Without Oil Injection				90cc With Oil Injection				100cc O/I	
			90 STD	90 TR	90 M	90 SP	90 D	90 TR	90 M	90 SP	100 SP	100 TR
1-1	1111-5000 <b>(EA1-11111)</b>	Cylinder head	X	X	X	X	X	X	X	X		
1-2	1111-5400 1115-5000 <b>(EA1-11112)</b>	Cylinder head Cylinder head nut	X	X	X	X	X	X	X	X	X	X
1-3	1115-5400 0411-0613 <b>(HW-6)</b>	Cylinder head nut 6MM flat washer	X	X	X	X	X	X	X	X	X	X
1-4	1121-5030 (1121-5010) <b>(EA1-11211)</b> <b>(EAE-11211)</b>	Cylinder - cast iron	X	X	X		X	X	X			
	1121-5020 <b>(EA2-11211)</b>	<b>Cylinder - aluminum 90</b>				X				X		
1-5	1121-5400 1126-5000 <b>(EA1-11212)</b> <b>1126-5010</b> <b>(EA2-11212)</b>	Cylinder aluminum 100 Cylinder head stud Cylinder head stud	X	X	X		X	X	X			X
	2121-5400	Cylinder mounting stud									X	X
1-6	114 1-5000 <b>(EA1-11411)</b> 1141-5010 <b>(EA2-11411)</b>	Gasket cylinder head Gasket cylinder head	X	X	X		X	X	X			X
	114 1-5400	Gasket cylinder head				X				X		X
1-7	1142-5000 <b>(EA1-11412)</b>	Exhaust pipe gasket	X	X	X	X	X	X	X	X		X
1-8	1142-5400 <b>1143-5000</b> <b>(EA1-11413)</b>	Exhaust pipe gasket Packing cylinder	X	X	X	X	X	X	X	X		X
1-9	1143-5400 0231-0600 <b>(6N-6)</b>	Packing - cylinder 6 M/M hex nut	X	X	X	X	X	X	X	X		X
1-10	0431-0615 (SW-6) 0411-0613 <b>(HW-6)</b>	6 M/M spring was her 6 M/M flat washer	X	X	X		X	X	X			X



2) CRANKSHAFT - PISTON - ROTARY VALVE



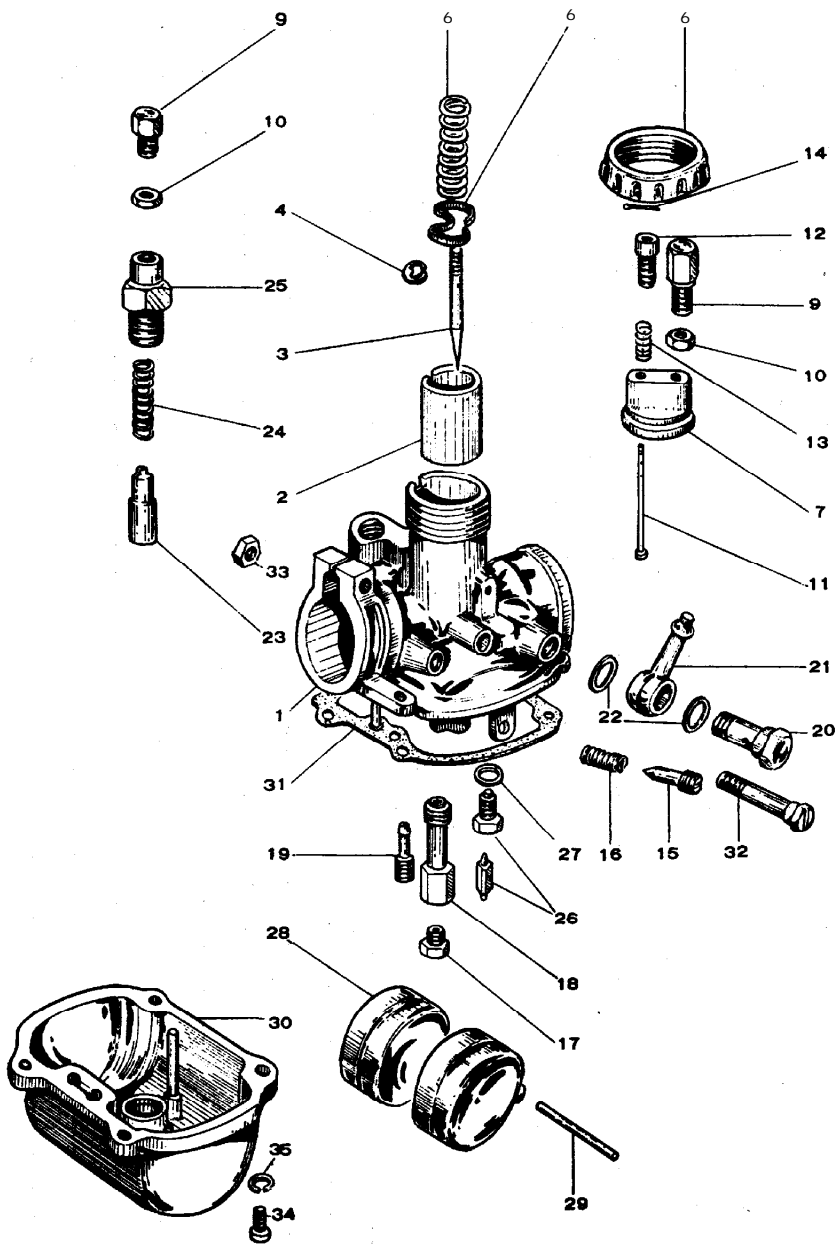
2) CRANKSHAFT - PISTON - ROTARY VALVE

INDEX NO.	PART NO.	DESCRIPTION	90cc Without Oil Injection				90cc With Oil Injection				100cc O/I		
			90 TD	90 TR	90 M	90 SP	90 D	90 TR	90 M	90 SP	100 SP	100 TR	
2-0	1301-5000 (EA1-13100)	Crankshaft before 12N Bushing type Use 1301-5010	X	X									
	1301-5010 (EA2-13100)	Crankshaft after 12N Needle type bearing	X	X	X	X	X	X	X	X	X	X	X
2-1	1311-5000 (EA1-13111)	Crankshaft - left half	X	X									
	1311-5010 (EA2-13111)	<b>Crankshaft</b> - left half	X	X	X	X	X	X	X	X	X	X	X
2-2	1312-5000 (EA1-13121)	Crankshaft - right half	X	X									
	1312-5010 (EA2-13121)	<b>Crankshaft</b> - right half	X	X	X	X	X	X	X	X	X	X	X
2-3	1321-5000 (EA1-13151)	Crank pin	X	X	X	X	X	X	X	X	X	X	X
2-4	1326-5000 (EA1-13152)	<b>Needle retainer</b>	X	X	X	X							
2-5	09063-102 (EA1-13153)	Needle roller	X	X	X	X							
	1325-5010	Needle bearing	X	X	X	X	X	X	X	X	X	X	X
2-6	1331-5010 (EA1-13210)	Connecting rod Needle bearing type	X	X	X	X	X	X	X	X	X	X	X
	(EA2-13211)												
2-7	1334-5000 (EA1-13212)	Bushing - <b>connecting</b> Rod before 12N	X	X									
	1333-5010 (EA2-13212)	Bearing connecting Rod aft 12N	X	X	X	X	X	X	X	X	X	X	X

## 2) CRANKSHAFT - PISTON - ROTARY VALVE

INDEX N O	PART NO.	DESCRIPTION	90cc Without Oil Injection				90cc With Oil Injection				100cc O/I		
			90 STD	90 TR	90 M	90 SP	90 D	90 TR	90 M	90 SP	100 SP	100 TR	
2-a	09021-103 <b>(EA1-13221)</b>	12 hex nut	X	X	X	X	X	X	X	X	X	X	X
2-9	0432-1230 (SW-12)	12 spring washer	X	X	X	X	X	X	X	X	X	X	X
2-10	1341-5000 <b>(EA1-13310)</b>	Piston <b>sid</b>	X	X	X		X	X	X				
	1342-5000 <b>(EA1-13310-25)</b>	Piston - 25 M/M O/S	X	X	X		X	X	X				
	1343-5000 <b>(EA1-13310-50)</b>	Piston .50 M/M O/S	X	X	X		X	X	X				
	1341-5010 <b>(EA2-133 10)</b>	Pistoh std				X				X			
	1341-5400	Piston std									X	X	
2-11	<b>1305-5000</b> <b>(EA1-13320)</b>	Piston ring set STD	X	X	X		X	X	X				
	1306-5000 <b>(EA1-13320-25)</b>	Piston ring set .25 O/S	X	X	X		X	X	X				
	1307-5008 <b>(EA1-13320-50)</b>	Piston ring set .50 O/S	X	X	X		X	X	X				
	<b>1305-5010</b> <b>(EA2-13320)</b>	Piston ring set STD				X				X			
	1305-5400	Piston ring set STD									X	X	
2-12	<b>1381-5000</b> <b>(EA1-13331)</b>	Piston pin	X	X	X	X	X	X	X				
	1381-5400	Piston pin									X	X	
2-13	1382-5000 <b>(EA1-13332)</b>	Circlip - piston pin	X	X	X	X	X	X	X	X	X	X	X
2-14	09049-106 <b>(EA1-13411)</b>	20 MM Shim	X	X	X	X	X	X	X	X	X	X	X
2-15	09062-103 <b>(EA1-13413)</b>	3 x 15 roller bef 12P	X	X	X								
	09063-104 <b>(GB2-13413)</b>	3 x 10 roller aft 12P for splined collar	X	X	X	X	X	X	X	X	X	X	X
2-16	<b>0671-3013</b> <b>(EO3314)</b>	3 MM woodruff key	X	X	X	X	X	X	X	X	X	X	X
2-17	1385-5000 <b>(EA1-13421)</b>	Pinion gear	X	X	X	X	X	X	X	X	X	X	X
2-18	09046-101 <b>(EA1-13422)</b>	10 MM wave washer	X	X	X	X	X	X	X	X	X	X	X
2-19	09029-103 <b>(EA1-13423)</b>	10 MM left thread nut	X	X	X	X	X	X	X	X	X	X	X
2-20	1412-5000 <b>(EA1-14110)</b>	Rotary valve bef 12P	X	X	X								
	1412-5010 <b>(EA2-14112)</b>	Rotary valve (splined)	X	X	X	X	X	X	X	X	X	X	X
2-21	<b>1451-5000</b> <b>(EA1-14121)</b>	Collar bef 12P	X	X	X								
	1451-3210 <b>(GB2-14121)</b>	Collar <b>spline</b> type	X	X	X	X	X	X	X	X	X	X	X
2-22	09066-102 <b>(EA1-14122)</b>	17 MM O ring	X	X	X								
2-23	1431-5000 <b>(EA1-14131)</b>	Rotary valve cover	X	X	X								
	1431-5010 <b>(EA2-14131)</b>	Rotary valve cover				X							
	1430-5010	Rotary valve cover					X	X	X				
	1430-5020	Rotary valve cover								X			
	1430-5400	Rotary valve cover									X	X	
2-24	09066-103 <b>(EA1-14132)</b>	108 MM O <b>ring</b>	X	X	X	X	X	X	X	X	X	X	X
2-25	09066-104 <b>(EA1-14133)</b>	23 MM O ring	X	X	X	X	X	X	X	X	X	X	X
2-26	09090-108 @A1-14141)	25-47-8 Oil seal	X	X	X	X	X	X	X	X	X	X	X
2-27	0311-0620 <b>(PNK-6x20)</b>	6 x 20 Rd head screw	X	X	X	X	X	X	X	X	X	X	X

### 3) CARBURETOR



## 3) CARBURETOR

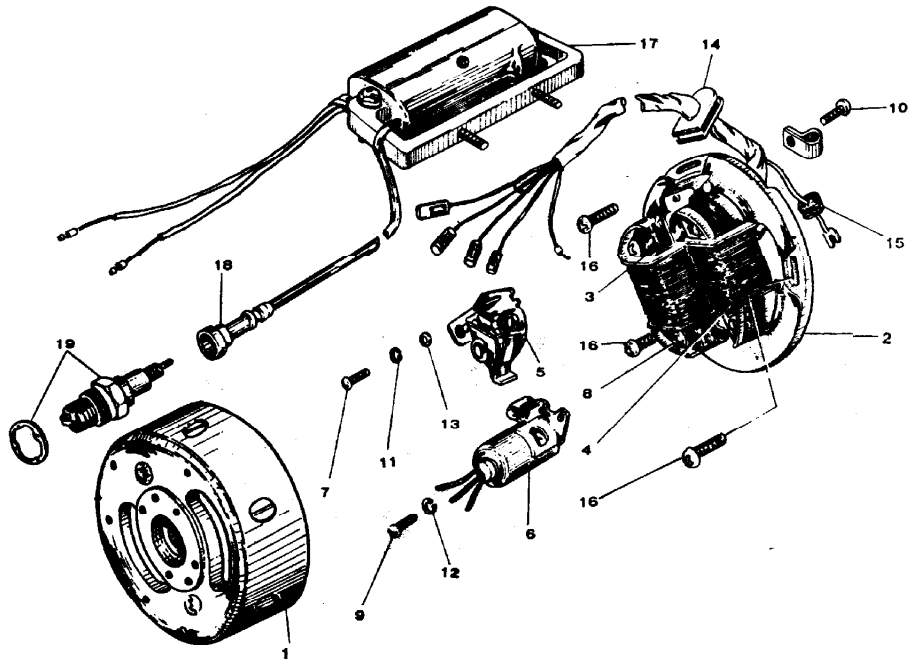
INDEX NO.	PART NO.	DESCRIPTION	90cc Without Oil Injection				90cc With Oil Injection				100cc O/I	
			90 STD	90 TR	90 M	90 SP	90 D	90 TR	90 M	90 SP	100 SP	100 TR
3-0	1600-5000 <b>(EA1-16100)</b>	15 MM carburetor With No. 100 jet	X									
	1600-5030 <b>(EA13-16100)</b> <b>(EAE-16100)</b>	15 MM carburetor With No. 130 jet	X	X	X		X	X	X			
	1600-5080 <b>(EA2-16100)</b>	17 MM carburetor With No. 110 jet				X				X		
	1600-5400	18 MM carburetor With No. 110 jet									X	X
3-1	1611-5000 <b>(EA1-16111)</b>	15 MM mixing chamber	X	X	X		X		X			
	1611-5010 <b>(EA2-16111)</b>	17 MM mixing chamber				X				X		
i-2	1614-5000 <b>(EA1-16121)</b>	Throttle valve	X	X	X		X	X	X			
	1614-5010 <b>(EA2-16121)</b>	Throttle valve				X				X		
3-3	1614-8000 1615-3021 <b>(E28122)</b>	Throttle valve Jet needle	X	X	X		X	X	X			X
	1615-5010	Jet needle				X				X	X	X
3-4	1616-3021 <b>(E28123)</b>	Needle clip	X	X	X		X	X	X			
	1616-5010 <b>(EA2-16123)</b>	Needle clip				X				X	X	X
3-5	1617-3021 <b>(E28124)</b>	Spring seat	X	X	X		X	X	X			
	1617-5010 <b>(EA2-16124)</b>	Spring seat				X				X	X	X
3-6	1618-5000 <b>(EA1-16125)</b>	Throttle valve spring	X	X	X		X	X	X			
	1618-5010 <b>(EA2-16125)</b>	Throttle valve spring				X				X	X	X
3-7	1619-5000 <b>(EA1-16126)</b>	Mixing chamber top	X	X	X		X	X	X			
	1619-5010 <b>(EA2-16126)</b>	Mixing chamber top				X				X	X	X
3-a	1621-5000 <b>(EA1-16127)</b>	Mixing chamber cap	X	X	X		X	X	X			
	1621-5010 <b>(EA2-16127)</b>	Mixing chamber cap				X				X	X	X
3-9	1622-5000 <b>(EA1-16128)</b>	Cable adjuster	X	X	X	X	X	X	X	X	X	X
3-10	1623-5000 <b>(EA1-16129)</b>	Lock nut	X	X	X	X	X	X	X	X	X	X
3-11	1626-5000 <b>(EA1-16131)</b>	Throttle stop rod	X	X	X		X	X	X			
	1626-5010 <b>(EA2-16131)</b>	Throttle stop rod				X				X	X	X
3-12	1627-5000 <b>(EA1-16132)</b>	Throttle stop screw	X	X	X		X	X	X			
	1627-5010 <b>(EA2-16132)</b>	Throttle stop screw				X				X	X	X
3-13	1628-5000 <b>(EA1-16133)</b>	Stop screw spring	X	X	X		X	X	X			
	1628-5010 <b>(EA2-16133)</b>	Stop screw spring				X				X	X	X
3-14	0551-1010 <b>(WP-1x10)</b>	1 x 10 cotter pin	X	X	X	X	X	X	X	X	X	X
3-15	163 1-5000 <b>(EA1-16135)</b>	Pilot air screw	X									
	163 1-3010 <b>(E28134)</b>	Pilot air screw		X	X	X	X	X	X	X	X	X

3) CARBURETOR

INDEX N O .	PART NO.	DESCRIPTION	90cc Without Oil Injection				90cc With Oil Injection				100cc O/I	
			90 STD	90 TR	90 M	90 SP	90 D	90 TR	90 M	90 SP	100 SP	100 TR
3-16	1632-3010 (EA1-16136) (E28135)	Air screw spring	X	X	X	X	X	X	X	X		
3-17	1635-5000-100  1635-5000-130	Main jet No. 100 before 12N Main jet No. 130 aft 12N	X									
	1635-5010-110	Main jet No. 110		X	X		X	X	X			
3-18	1633-3100 (GA1-16145) 1633-5030 1633-5010 (EA2-16142)	Needle jet  Needle jet Needle jet	X	X	X			X	X	X	X	X
3-19	1634-3110 (GA1-16146) 1634-5010 (EA2-16143)	Pilot jet  Pilot jet	X	X	X		X	X	X			
						X				X	X	X
3-20	1651-5000 (EA1-16151)	Union bolt	X	X	X	X	X	X	X	X	X	X
3-21	1652-5010 (EA1-16152)	Union connector	X	X	X	X	X	X	X	X	X	X
3-22	1654-3100 (EA1-16153)	Union washer	X	X	X	X	X	X	X	X	X	X
3-23	1645-5000 (EA1-16161)	Starter plunger	X	X	X	X	X	X	X	X	X	X
3-24	1646-5000 (EA1-16162)	Plunger spring	X	X	X	X	X	X	X	X	X	X
3-25	1647-5000 (EA1-16163) 1647-5010 (EA2-16163)	Plunger cap  Plunger cap	X	X	X		X	X	X		X	X
						X				X	X	X
3-26	1660-3100 (GA1-16170) 1660-5000	Float needle valve  Float needle valve	X	X	X		X	X	X		X	X
						X				X	X	X
3-27	1665-3100 (GA1-16173)	Packing needle seat	X	X	X	X	X	X	X	X	X	X
3-28	1666-3100 (GA1-16181) 1666-5010	Float  Float	X	X	X		X	X	X		X	X
3-29	1667-3100 (GA1-16182)	Float pin	X	X	X	X	X	X	X	X	X	X
3-30	1656-5000 (EA1-16183) 1656-8000 (EA2-16183)	Float chamber  Float chamber	X	X	X		X	X	X			
						X				X	X	X
3-31	1657-5010 (GA1-16184) 1657-5010 (EA2-16184)	Packing float chamber  Packing float chamber	X	X	X		X	X	X		X	X
						X				X	X	X
3-32	1613-3020 (EA1-16191) 1613-5010 (EA2-16191)	Clamp screw  Clamp screw	X	X	X		X	X	X		X	X
						X				X	X	X
3-33	0221-0500 (6N-5) 0211-0600 (6N1-6)	5 MM hex nut  6 MM hex nut	X	X	X		X	X	X		X	X
						X				X	X	X
3-34	0311-0414	4 x 14 screw	X	X	X	X	X	X	X	X	X	X
3-35	0431-0410	4 MM lock washer	X	X	X	X	X	X	X	X	X	X

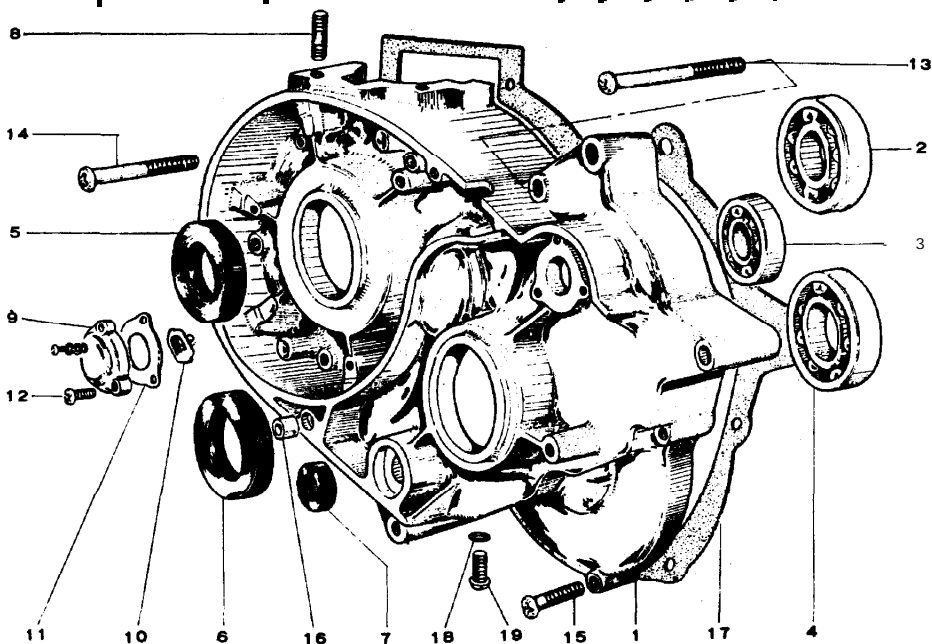
4) FLYWHEEL MAGNETO - IGNITION COIL

INDEX NO.	PART NO.	DESCRIPTION	90cc Without Oil Injection				90cc With Oil Injection				100cc O/I		
			90 STD	90 TR	90 M	90 SP	90 D	90 TR	90 M	90 SP	100 SP	100 TR	
4-0	1701-5000 (EA1-17100)	Flywheel magneto	X	X	X	X	X	X	X	X	X	X	X
4-1	1718-5000 (EA1-17111)	Flywheel	X	X	X	X	X	X	X	X	X	X	X
4-2	1710-5000 (EA1-17210)	Coil frame	X	X	X	X	X	X	X	X	X	X	X
4-3	1713-5000 (EA1-17212)	Primary ignition coil	X	X	X	X	X	X	X	X	X	X	X
4-4	1714-5000 (EA1-17213)	Lighting coil	X	X	X	X	X	X	X	X	X	X	X
4-5	1752-5000 (EA1-17230)	Contact breaker assy	X	X	X	X	X	X	X	X	X	X	X
4-6	1753-5000 (EA1-17241)	Condenser	X	X	X	X	X	X	X	X	X	X	X
4-7	0361-0412	4 x 12 screw	X	X	X	X	X	X	X	X	X	X	X
4-8	0361-0424	4 x 24 screw	X	X	X	X	X	X	X	X	X	X	X
4-9	0361-0510	5 x 10 screw	X	X	X	X	X	X	X	X	X	X	X
4-10	0361-0407	4 x 7 screw	X	X	X	X	X	X	X	X	X	X	X
4-11	0431-04 10	4 MM lock washer	X	X	X	X	X	X	X	X	X	X	X
4-12	0431-0513	5 MM lock washer	X	X	X	X	X	X	X	X	X	X	X
4-13	0411-0410	4 MM flat washer	X	X	X	X	X	X	X	X	X	X	X
4-14	1755-5000 (EA1-17251)	Wire grommet	X	X	X	X	X	X	X	X	X	X	X
4-15	1764-5000 (EA1-17252)	Neutral switch gromme	X	X	X	X	X	X	X	X	X	X	X
4-16	0311-0512	5 x 12 screw	X	X	X	X	X	X	X	X	X	X	X
4-17	8501-5001 (EA1-89310)	Ignition coil	X	X	X	X	X	X	X	X	X	X	X
4-18	8520-5000 (EA1-89320)	Plug cap	X	X	X	X	X	X	X	X	X	X	X
4-19	B-7H B-7HZ B-8H	NGK spark plug NGK spark plug NGK spark plug	X	X		X	X	X		X		X	X



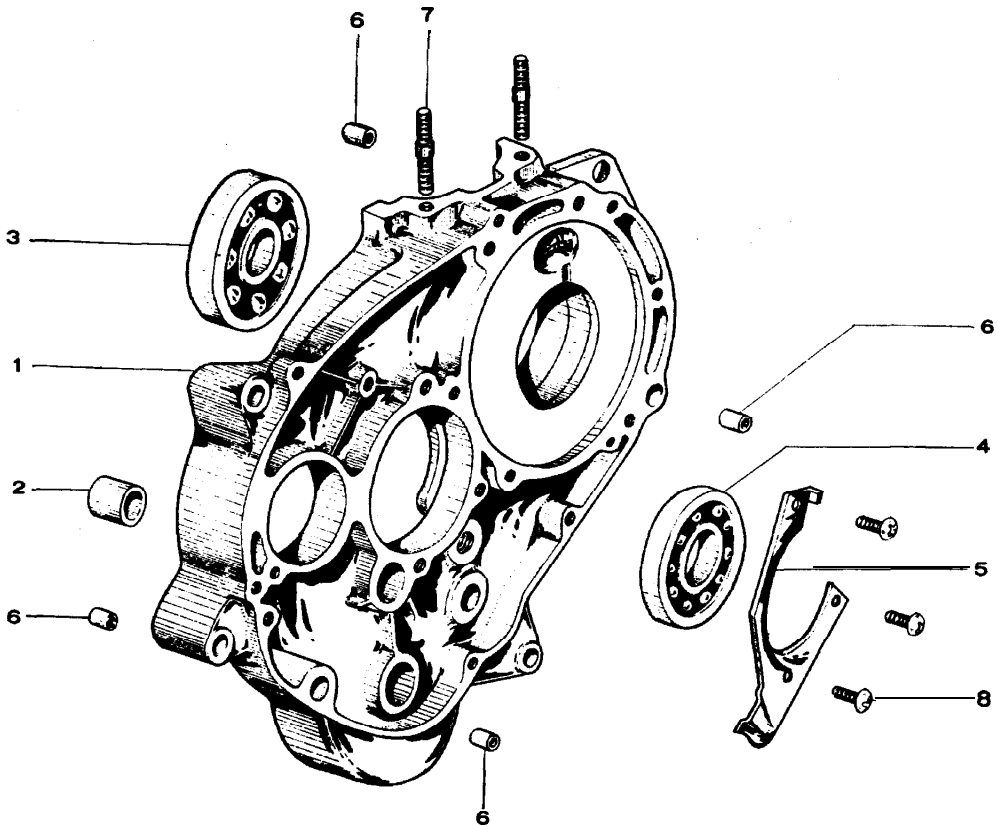
### 5) CRANKCASE A

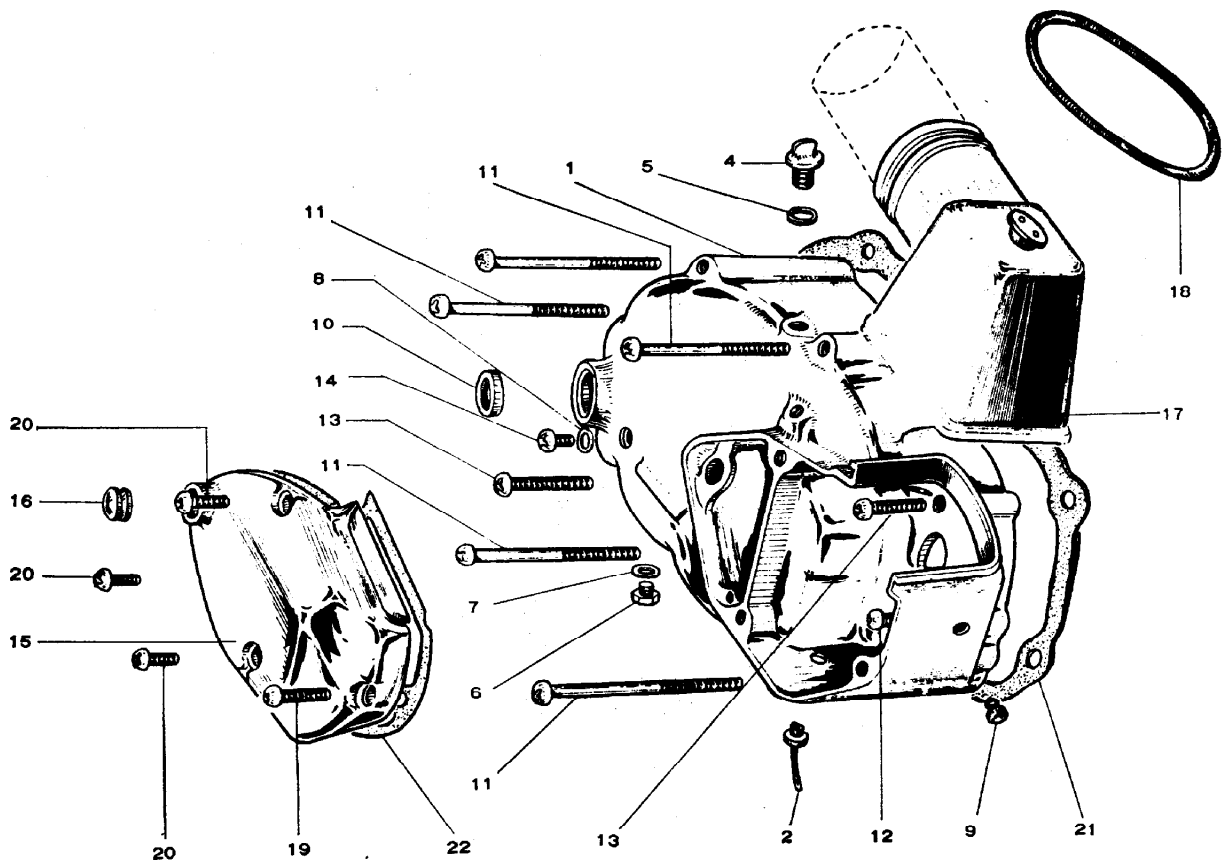
INDEX N O	PART NO.	DESCRIPTION	90cc Without Oil Injection				90cc With Oil Injection				100cc O/I	
			90 STD	90 TR	90 M	90 SP	90 D	90 TR	90 M	90 SP	100 SP	100 TR
5-1	2110-5010 (EA1-21110)	Left crankcase comp	X	X	X	X	X	X	X	X		
	2110-5400	Left crankcase comp									X	X
5-2	07-6304-03 (EA1-21121)	Ball bearing	X	X	X	X	X	X	X	X	X	X
5-3	07-6201-03 (EA1-21122)	Ball bearing	X	X	X	X	X	X	X	X	X	X
5-4	07-6303-01 (E03311)	Ball bearing	X	X	X	X	X	X	X	X	X	X
5-5	09090-106 (EA1-21124)	20-32-7 oil seal	X	X	X	X	X	X	X	X	X	X
5-6	09090-107 (GA1-21261)	21-35-7 oil seal	X	X	X	X	X	X	X	X	X	X
5-7	09090-101 E O 2 6 1 4 )	12-22-7	X	X	X	X	X	X	X	X	X	X
5-8	2121-5000 (EA1-21127)	6 x 27 cylinder stud	X	X	X	X	X	X	X	X		
	2121-5400	Cylinder stud									X	X
5-9	1761-5000 (EA1-17311)	Neutral switch case	X	X	X	X	X	X	X	X	X	X
5-10	1762-5000 (EA1-17312)	Contact plate	X	X	X	X	X	X	X	X	X	X
5-11	1763-5000 (EA1-17313)	Packing-neutral switch	X	X	X	X	X	X	X	X	X	X
5-12	0311-0516	5 x 16 screw	X	X	X	X	X	X	X	X	X	X
5-13	0311-0655	6 x 55 screw	X	X	X	X	X	X	X	X	X	X
5-14	0311-0645	6 x 45 screw	X	X	X	X	X	X	X	X	X	X
5-15	0311-0625	6 x 25 screw	X	X	X	X	X	X	X	X	X	X
5-16	09057-101	6 x 10 dowel pin	X	X	X	X	X	X	X	X	X	X
5-17	2181-5000 (EA1-21511)	Crankcase gasket	X	X	X	X						
	2181-5010	Crankcase gasket					X	X	X	X	X	X
5-18	09064-102 (E02632)	6 MM fiber packing	X	X	X	X	X	X	X	X	X	X
5-19	0111-0608	6 x 8 hex bolt	X	X	X	X	X	X	X	X	X	X



6) CRANKCASE B

INDEX N O	PART NO.	DESCRIPTION	90cc Without Oil Injection				90cc With Oil Injection				100cc O/I	
			90 STD	90 TR	90 M	90 SP	90 D	90 TR	90 M	90 SP	100 SP	100 TR
6-1	2130-5001 <b>(EA1-21210)</b>	Right crankcase	X	X	X	X						
	2 130-5010	Right crankcase					X	X	X	X		
	2130-5400	Right crankcase									X	X
6-2	2 133-5000 <b>(EA1-2 12 13)</b>	Bushing-drive shaft	X	X	X	X	X	X	X	X	X	X
6-3	07-6304-03 <b>(EA1-21121)</b>	Ball bearing 6304	X	X	X	X	X	X	X	X	X	X
6-4	07-6006-01 <b>(EA1-21222)</b>	Ball bearing 6006	X	X	X	X	X	X	X	X	X	X
6-5	2145-5000 <b>(EA1-21224)</b>	Bearing holder	X	X	X	X	X	X	X	X	X	X
6-6	09057-101 <b>(E025 16)</b>	Dowel pin	X	X	X	X	X	X	X	X	X	X
6-7	2121-5000 <b>(EA1-21127)</b>	6 x 2 7 cylinder stud	X	X	X	X	X	X	X			
	212 1-5400	<b>Cylinder</b> stud										X
6-8	0311-0614	6 x 14 screw	X	X	X	X	X	X	X	X	X	X
6-9	2 135-5000	Breather tube	X	X	X	X	X	X	X	X	X	X



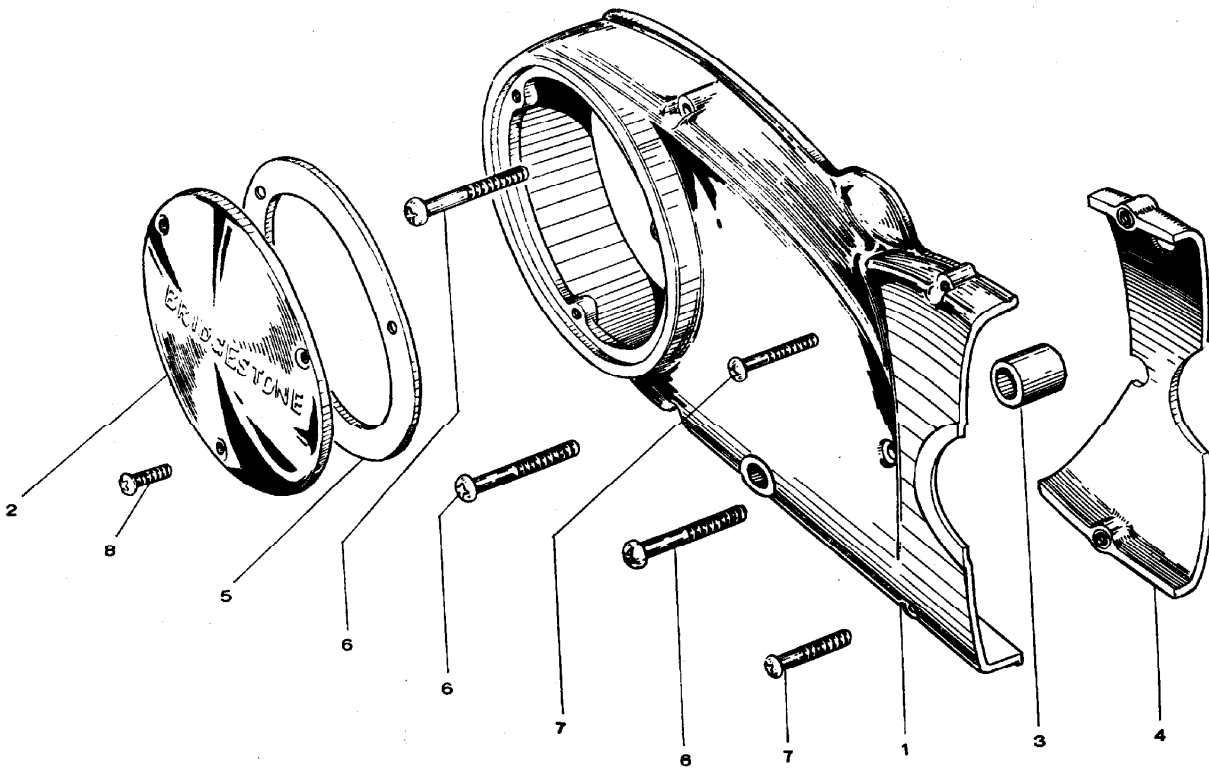


## 7) TRANSMISSION CASE

INDEX N O	PART NO.	DESCRIPTION	90cc Without Oil Injection				90cc With Oil Injection				100cc O/I	
			90 STD	90 TR	90 M	90 SP	90 D	90 TR	90 M	90 SP	100 SP	100 TR
7-1	<b>2160-5000</b> <b>(EA1-21310)</b>	Right crankcase cover	X	X	X	X						
7-2	2160-5010 2162-5002 <b>(EA1-21321)</b>	Right crankcase cover Drain pipe					X	X	X	X	X	X
<b>7-3</b>	2 162-5002 <b>(EA1-21322)</b>	Drain pipe	X	X	X	X	X	X	X	X	X	X
7-4	2165-5000 <b>(EA1-2 1332)</b>	Oil filler plug	X	X	X	X						
7-5	2165-8000 09066-105 <b>(EA1-21333)</b>	Oil filler plug 14 MM 0 ring					X	X	X	X	X	X
7-6	09066-107 09058-102 <b>(EA1-21334)</b>	21 MM 0 ring Drain plug					X	X	X	X	X	X
7-7	09065- 102 <b>(EA1-21335)</b>	16 aluminum gasket	X	X	X	X	X	X	X	X	X	X
7-8	09064-102 <b>(E02632)</b>	6 MM fiber gasket	X	X	X	X	X	X	X	X	X	X
7-9	2168-5000 <b>(EA1-21337)</b>	12 Rubber plug	X	X	X	X	X	X	X	X	X	X
<b>7-10</b>	09090-103 (E026 13)	15-25-7 oil seal	X	X	X	X	X	X	X	X	X	X
7-11	03 1 1-0665	6 x 65 screw	X	X	X	X	X	X	X	X	X	X
7-12	03 11-0645	6 x 45 screw	X	X	X	X	X	X	X	X	X	X
7-13	0311-0635	6 x 35 screw	X	X	X	X	X	X	X	X	X	X
<b>7-14</b>	<b>0111-0608</b>	6 x 8 hex bolt	X	X	X	X	X	X	X	X	X	X
7-15	2176-5000 <b>(EA1-21351)</b>	Carburetor cover	X	X	X							
	2176-5010 <b>(EA2-21351)</b>	Carburetor cover				X						
	2176-5020	Carburetor cover					X	X	X	X	X	X
7-16	2 179-5000 <b>(EA1-2 1352)</b>	Release cap	X	X	X	X	X	X	X	X	X	X
7-17	2 177-5000 <b>(EA1-2 1353)</b>	Carburetor air cap	X	X	X							
	2177-5010 <b>(EA2-2 13 53)</b>	Carburetor air cap				X						
	2177-5020	Carburetor air cap					X	X	X	X	X	X
7-18	2178-5000 <b>(EA1-21355)</b>	Carburetor cap ring	X	X	X							
	2 178-5010 <b>(EA2-2 1355)</b>	Carb cap ring				X	X	X	X	X	X	X
7-19	03 11-0625	6 x 25 screw	X	X	X	X	X	X	X	X	X	X
7-20	03 1 1-0620	6 x 20 screw	X	X	X	X	X	X	X	X	X	X
7-21	2183-5000 <b>(EA1-21512)</b>	Packing crankcase cover	X	X	X	X						
	2183-5010	Packing crankcase cover					X	X	X	X	X	X
7-22	2185-5000 <b>(EA1-21513)</b>	Packing-carb cover	X	X	X	X						
	2185-5010	Packing-carb cover					X	X	X	X	X	X
7-23	1582-5012	Oil pump cable bracket:					X	X	X	X	X	X
7-24	0311-0512	5 x 12 MM cable bracket s crew					X	X	X	X	X	X

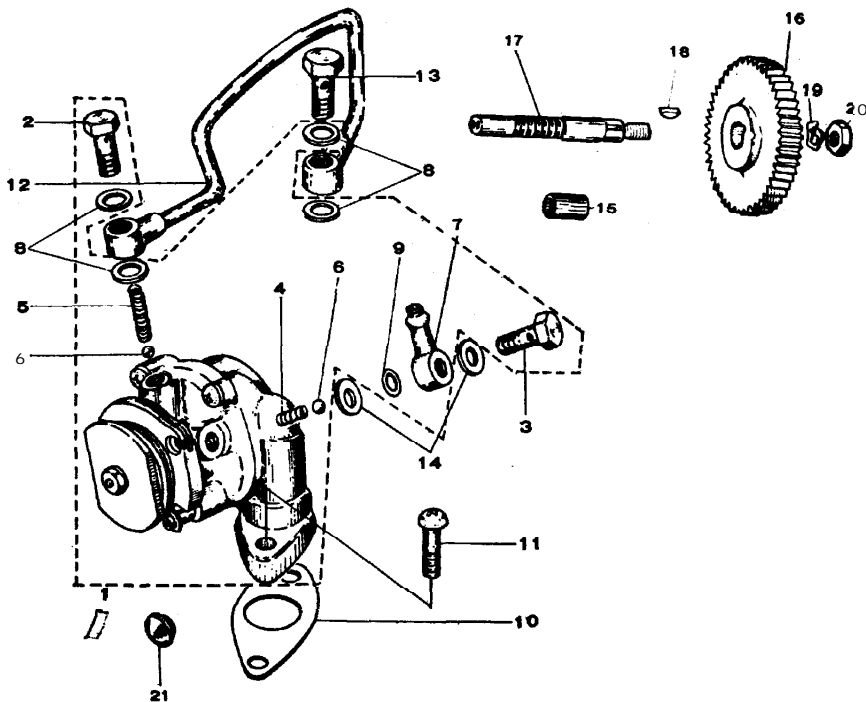
8) MAGNETO CASE

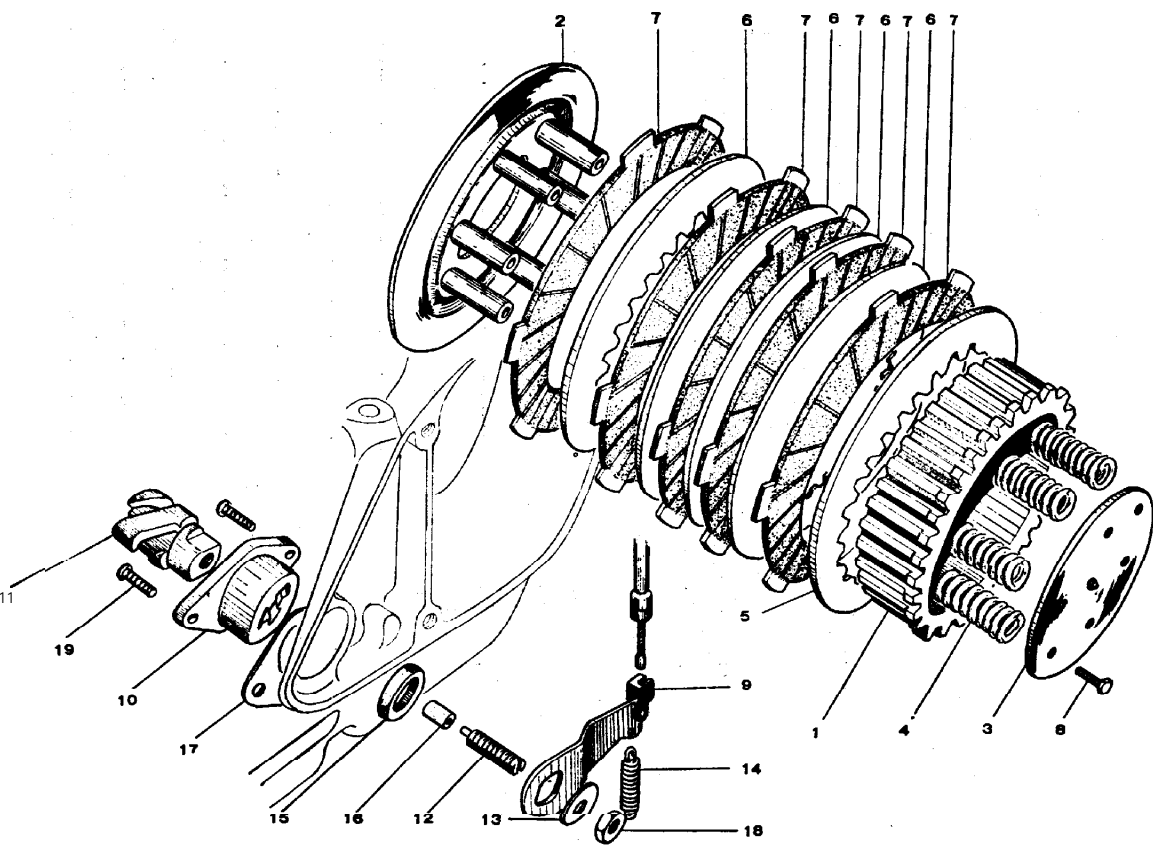
INDEX N O	PART NO.	DESCRIPTION	90cc Without Oil Injection				90cc With Oil Injection				100cc O/I	
			90 STD	90 TR	90 M	90 SP	90 D	90 TR	90 M	90 SP	100 SP	100 TR
			<b>8-1</b>	2151-5020 (EA1-21411)	Magneto case	X	X		X	X	X	
	2151-5030 (EA13-21411)	Magneto case			X				X			
<b>8-2</b>	2152-5001 (EA1-21412)	Magneto case cover	X	X	X	X	X	X	X	X	X	X
<b>8-3</b>	2156-5000 (EA1-21422)	Rubber bushing	X	X	X	X	X	X	X	X	X	X
<b>8-4</b>	2153-5001 (EA1-21431)	Dust cover	X	X	X	X	X	X	X	X	X	X
<b>8-5</b>	2184-5000 (EA1-21514)	Packing-magneto cover	X	X	X	X	X	X	X	X	X	X
<b>8-6</b>	0311-0635	6 x 35 screw	X	X	X	X	X	X	X	X	X	X
<b>8-7</b>	0311-0625	6 x 25 screw	X	X	X	X	X	X	X	X	X	X
<b>8-8</b>	0342-0515	5 x 15 screw	X	X	X	X	X	X	X	X	X	X



### 9) OIL PUMP

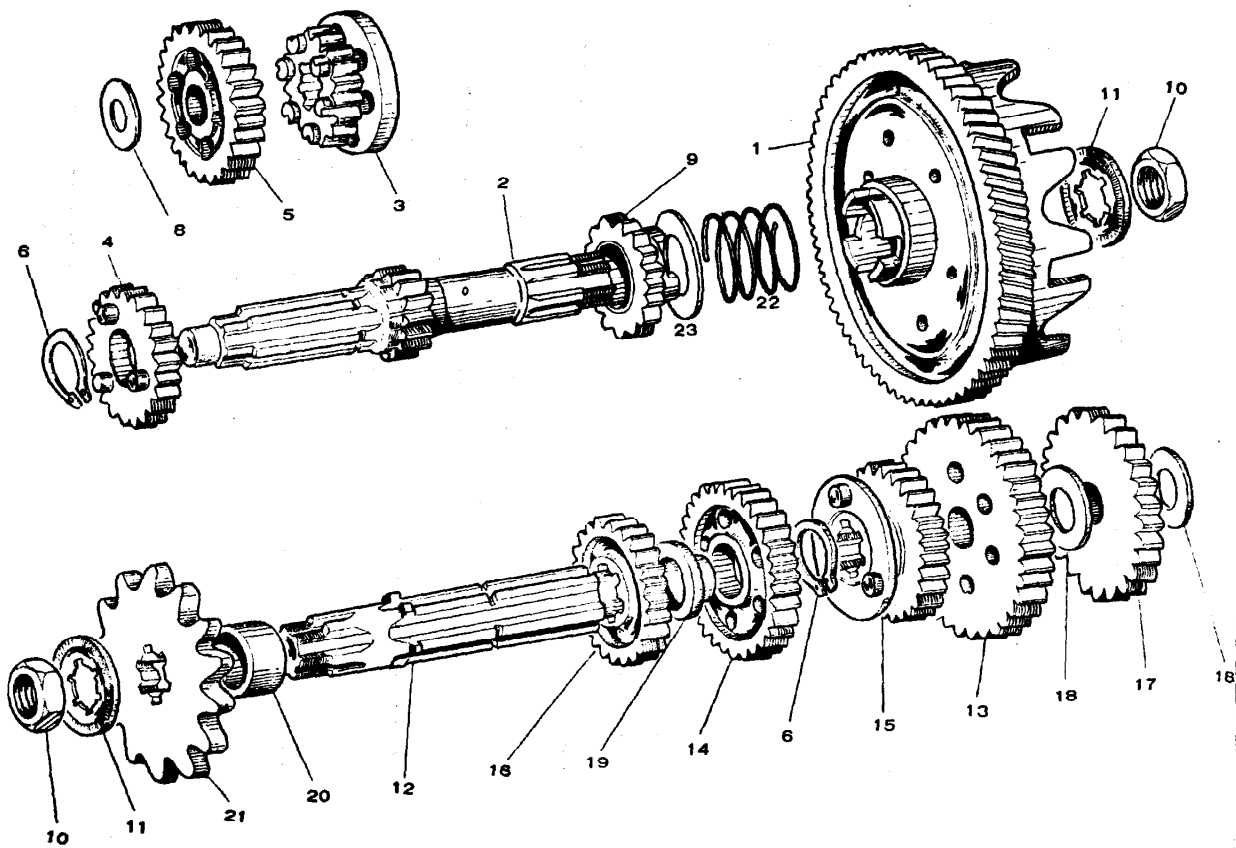
INDEX N O	PART NO.	DESCRIPTION	90cc Without Oil Injection				90cc With Oil Injection				100cc O/I	
			90 STD	90 TR	90 M	90 SP	90 D	90 TR	90 M	90 SP	100 SP	100 TR
			9-1	1501-5020	Oil pump assembly					X	X	X
	150 1-5030	Oil pump assembly								X	X	X
9-2	1564-5010	Union bolt outlet					X	X	X	X	X	X
9-3	1572-5010	Union bolt inlet					X	X	X	X	X	X
9-4	1568-5010	Check ball spring inlet					X	X	X	X	X	X
9-5	1569-5010	Check ball spring outlet					X	X	X	X	X	X
9-6	0611-0108	1/8 ball					X	X	X	X	X	X
9-7	1571-5010	Union connector B					X	X	X	X	X	X
9-8	09065-103	6mm aluminum gasket					X	X	X	X	X	X
9-9	09066-1 17	6mm O ring					X	X	X	X	X	X
9-10	1563-50 10	Pump gasket					X	X	X	X	X	X
9-11	0311-0516	5 x 6 mm screw					X	X	X	X	X	X
9-12	1566-5010	Oil tube A					X	X	X	X	X	X
9-13	1564-8000	Union bolt					X	X	X	X	X	X
9-14	<b>09065-</b> 103	6mm aluminum gasket					X	X	X	X	X	X
9-15	1513-5010	Worm shaft bushing					X	X	X	X	X	X
9-16	1552-5010	Pump gear B					X	X	X	X	X	X
9-17	1555-5010	Worm shaft					X	X	X	X	X	X
9-18	0671-2510	Woodruff key					X	X	X	X	X	X
9-19	0451-0815	Toothed washer					X	X	X	X	X	X
9-20	0231-0800	8mm hex nut					X	X	X	X	X	X
9-21	1587-5010	Rubber plug					X	X	X	X	X	X
9-22	1582-5012	Cable adjusting <b>bracket</b>					X	X	X	X	X	X





INDEX N O.	PART NO.	DESCRIPTION	90cc Without Oil Injection				90cc With Oil Injection				100cc O/I	
			90 STD	90 TR	90 M	90 SP	90 D	90 TR	90 M	90 SP	100 SP	100 TR
			10-1	222 1-5000 (EA1-22111)	Clutch hub	X	X	X	X	X	X	X
10-2	22 10-5000 (EA1-22112)	Pressure plate	X	X	X	X	X	X	X	X	X	X
10-3	2227-5000 (EA1-22 115)	Set plate comp	X	X	X	X	X	X	X	X	X	X
10-4	22 18-5000 (EA1-22 118)	Clutch spring	X	X	X		X	X	X			
10-5	22 18-5010 2216-5000 (EA1-22119)	Clutch spring Outer plate	X	X	X	X	X	X	X	X	X	X
10-6	2215-5000 (EA1-22120)	Inner plate	X	X	X	X	X	X	X	X	X	X
10-7	22 14-5000 (EA1-22121)	Friction plate	X	X	X	X	X	X	X	X	X	X
10-8	0113-0512	5 x 12 hex bolt	X	X	X	X	X	X	X	X	X	X
10-9	2260-5000 (EA1-22221)	Release arm	X	X	X	X						
10-10	2261-5010 2275-5010 2264-5000 (EA1-22225)	Release arm Pin release arm Release screw					X	X	X	X	X	X
10-11	2264-8000 2265-5000 (EA1-22226)	Release screw Release push screw	X	X	X	X	X	X	X	X	X	X
10-12	2267-5000 (EA1-22227)	Adj ustlng screw	X	X	X	X	X	X	X	X	X	X
10-13	2268-5000 (EA1-22228)	Washer-adj screw	X	X	X	X	X	X	X	X	X	X
10-14	2271-5000 (EA1-22229)	Release return spring	X	X	X	X						
10-15	2271-5010 09090- 102 (EA1-22230)	Release return spring 15-21-3 Oil seal	X	X	X	X	X	X	X	X	X	X
10-16	09056-105 (EA1-2223 1)	6 x 10 roller	X	X	X	X	X	X	X	X	X	X
10-17	2186-5000 (EA1-21515)	Release screw gasket	X	X	X	X	X	X	X	X	X	X
10-18	023 1-0600	6mm hex nut	X	X	X	X	X	X	X	X	X	X
10-19	0331-0614	6 x 14 screw	X	X	X	X	X	X	X	X	X	X

# 11) TRANSMISSION



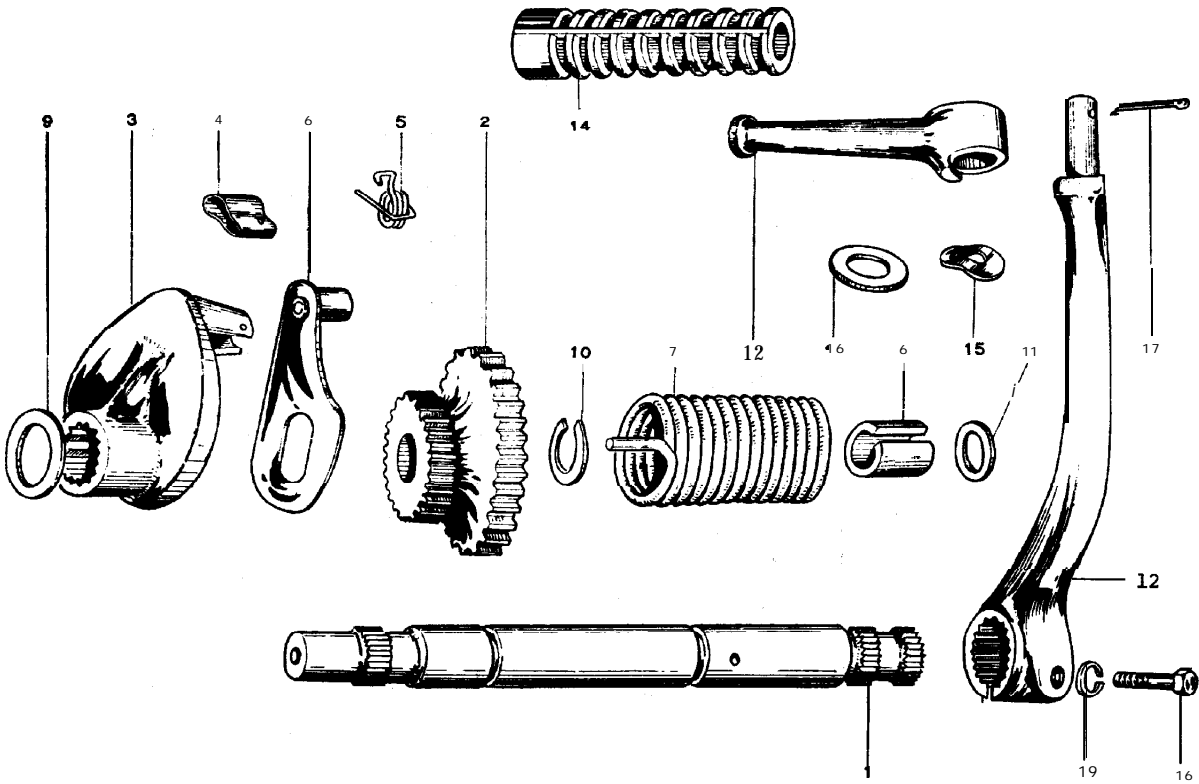
INDEX N O .	PART NO.	DESCRIPTION	90cc Without Oil Injection				90cc With Oil Injection				100cc O/I	
			90 STD	90 TR	90 M	90 SP	90 D	90 TR	90 M	90 SP	100 SP	100 TR
11-1	2410-5001 (EA1-23110)	Driven gear	X	X	X	X	X	X	X	X	X	X
11-2	2421-5001 (EA1-23211)	Counter shaft	X	X	X	X	X	X	X	X	X	X
11-3	2426-5000 (EA1-23212)	Second gear A	X	X	X	X	X	X	X	X	X	X
11-4	2431-5000 (EA1-23213)	Third gear A	X	X	X	X	X	X	X	X	X	X
11-5	2436-5000 (EA1-23214)	High gear A	X	X	X	X	X	X	X	X	X	X
11-6	09002-103 (EA1-23215)	17mm snap ring	X	X	X	X	X	X	X	X	X	X
11-7	2478-5000 (EA1-23216)	Bushing-driven gear before 12T	X	X	X	X						
11-8	09048-101 (EA1-23217)	12mm thrust washer	X	X	X	X	X	X	X	X	X	X
11-9	2610-5000 (EA1-23220)	Kick gear A	X	X	X	X	X	X	X	X	X	X
11-10	09021-102 (EA1-23231)	16mm hex nut	X	X	X	X	X	X	X	X	X	X
11-11	09047-103 (EA1-23232)	17mm lock washer	X	X	X	X	X	X	X	X	X	X
11-12	2446-5000 (EA1-23311)	Drive shaft bef 12K	X	X	X	X						
	2446-5001 (EA1-23311-1)	Drive shaft aft 12K	X	X	X	X	X	X	X	X	X	X
11-13	2451-5000 (EA1-23312)	First gear B	X	X	X	X	X	X	X	X	X	X
11-14	2456-5000 (EA1-23313)	Second gear B	X	X	X	X	X	X	X	X	X	X
11-15	2461-5000 (EA1-23314)	Third gear B	X	X	X	X	X	X	X	X	X	X
11-16	2466-5000 (EA1-23315)	High gear B	X	X	X	X	X	X	X	X	X	X
11-17	2616-5000 (EA1-23316)	Kick starter gear B	X	X	X	X	X	X	X	X	X	X
11-18	09048-102 (EA1-23317)	13mm thrust washer	X	X	X	X	X	X	X	X	X	X
11-19	2481-5000 (EA1-23318)	Drive shaft collar	X	X	X	X	X	X	X	X	X	X
11-20	2483-5000 (EA1-23321)	Oil seal collar	X	X	X	X	X	X	X	X	X	X
11-21	2484-5000 (EA1-23322)	Drive sprocket 14T	X	X	X	X	X	X	X			
	2484-5400	Drive sprocket 15T								X	X	
11-22	2424-5000	Spring clutch gear					X	X	X	X	X	X
11-23	09048-106	17mm thrust washer					X	X	X	X	X	X



12) GEAR CHANGE SHAFT-SHIFT DRUM  
GEAR CHANGE PEDAL

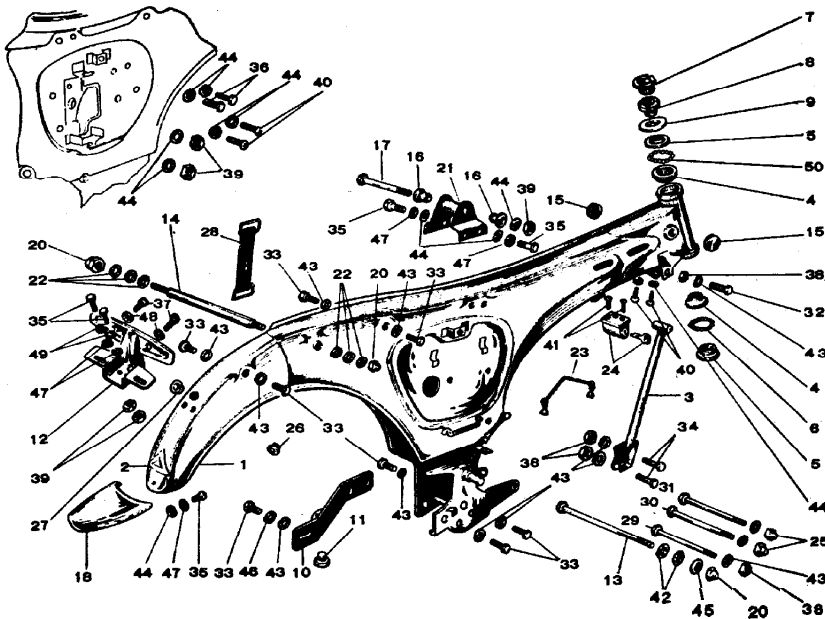
INDEX N O .	PART NO.	DESCRIPTION	90cc Without Oil Injection				90cc With Oil Injection				100cc O/I			
			90 STD	90 TR	90 M	90 SP	90 D	90 TR	90 M	90 SP	100 SP	100 TR		
12-1	25 10-5000 <b>(EA1-24110-0)</b> 2510-5002 <b>(EA1-24110-1)</b>	Gear change shaft bef 2-66 Gear change shaft aft 2-66	X	X	X	X								
12-2	2517-5000 <b>(EA1-24115)</b>	Drum shifter spring	X	X	X	X	X	X	X	X	X	X	X	X
12-3	2551-5000 <b>(EA1-24117)</b>	<b>Return spring</b>	X	X	X	X	X	X	X	X	X	X	X	X
12-4	2553-5000 <b>(EA1-24118)</b>	Stopper pin	X	X	X	X	X	X	X	X	X	X	X	X
12-5	2552-3002 <b>(E06114)</b>	<b>12mm washer</b>	X	X	X	X	X	X	X	X	X	X	X	X
12-5	2502-5000 <b>(EA1-242 10)</b> <b>2502-5001</b> <b>(EA1-242 10-1)</b>	Shift drum bef 5-66 Shift drum aft 5-66	X	X	X	X								
12-7	2522-5000 <b>(EA1-24212)</b> 2522-3200 <b>(GB1-242 12)</b>	Shift pin bef 5-66 Shift pin aft 5-66	X	X	X	X								
12-8	2523-5000 <b>(EA1-24213)</b> 2523-3200 <b>(GB1-242 13)</b>	Shift pin stopper bef 5-66 Shift pin stopper aft 5-66	X	X	X	X	X	X	X	X	X	X	X	X
12-9	2524-5000 <b>(EA1-242 14)</b> 2524-3200 <b>(GB1-242 14)</b>	Shift pin holder bef 5-66 Shift pin holder	X	X	X	X	X	X	X	X	X	X	X	X
12-10	2541-5001 <b>(EA1-242 15)</b>	Shift fork	X	X	X	X	X	X	X	X	X	X	X	X
12-11	2544-5000 <b>(EA1-242 16)</b> 2544-3200 <b>(GB1-24216)</b>	Fork guide bef 7-65 Fork guide aft 7-65	X	X	X	X	X	X	X	X	X	X	X	X
12-12	<b>0551-2525</b>	2.5 x 25 cotter pin	X	X	X	X	X	X	X	X	X	X	X	X
12-13	0311-0512	5 x 12 screw	X	X	X	X	X	X	X	X	X	X	X	X
12-14	2549-5000 <b>(EA1-24221-0)</b> 2549-5001 <b>(EA1-24221-1)</b>	Thrust receiver bef 3-65 Thrust receiver aft 3-65	X	X	X	X	X	X	X	X	X	X	X	X
12-15	0441-0611 <b>(EA1-24222)</b>	lock plate	X	X	X	X	X	X	X	X	X	X	X	X
12-16	0112-0614	6 x 14mm hex bolt	X	X	X	X	X	X	X	X	X	X	X	X
12-17	2531-5001 <b>(EA1-24230)</b>	Drum stopper	X	X	X	X	X	X	X	X	X	X	X	X
12-18	2536-5000 <b>(EA1-24232)</b>	<b>Drum stopper bolt</b>	X	X	X	X	X	X	X	X	X	X	X	X
12-19	2538-5000 <b>(EA1-24235)</b>	Drum stopper spring	X	X	X	X	X	X	X	X	X	X	X	X
12-20	2537-5000 <b>(EA1-24234)</b>	6mm collar	X	X	X	X	X	X	X	X	X	X	X	X
12-2 1	2581-5000 <b>(EA1-243 11)</b>	Gear change pedal	X	X		X	X	X		X	X	X	X	X
12-22	2581-5030 2582-5000 <b>(EA1-243 12)</b>	Gear change pedal Change pedal rubber	X	X	X	X	X	X	X	X	X	X	X	X
12-23	0113-0620	6 x 20mm hex bolt	X	X	X	X	X	X	X	X	X	X	X	X
12-24	0431-0615	6mm lock washer	X	X	X	X	X	X	X	X	X	X	X	X
12-25	2557-8000	Collar-change shaft aft 2-66	X	X	X	X	X	X	X	X	X	X	X	X

# 13) KICK SHAFT - KICK PEDAL



13) KICK SHAFT - KICK PEDAL

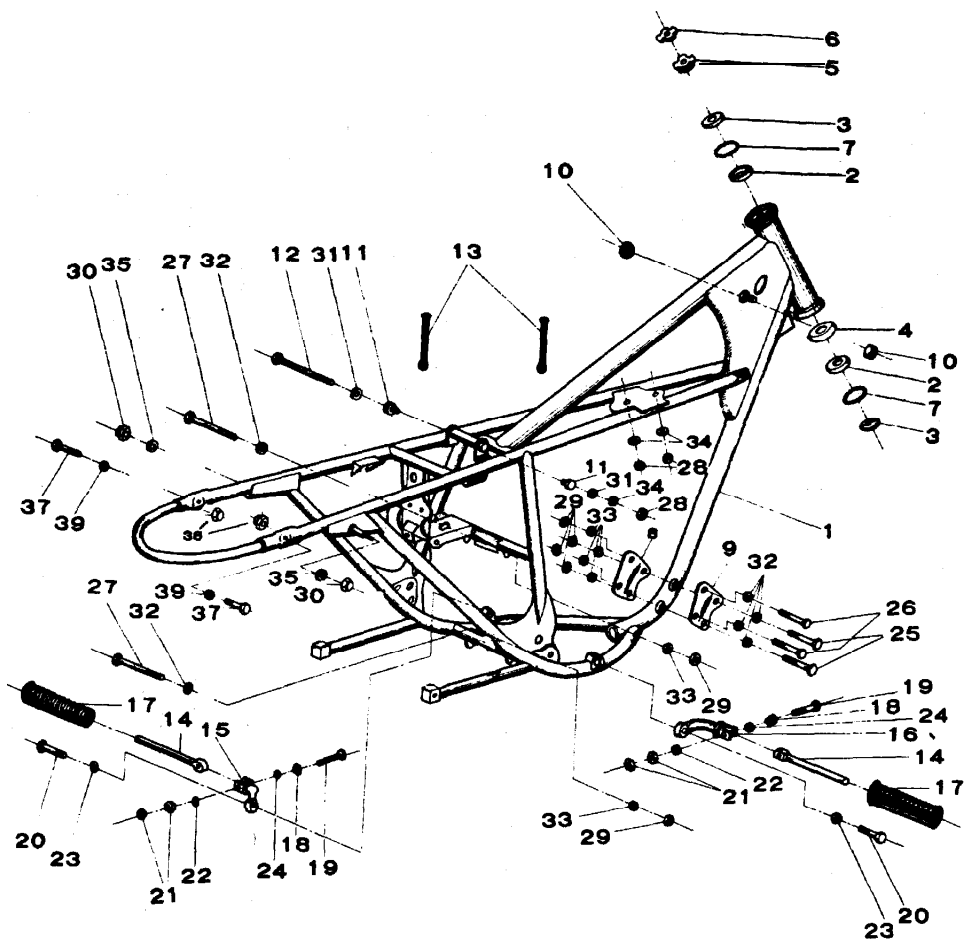
INDEX N O	PART NO.	DESCRIPTION	90cc Without Oil Injection				90cc With Oil Injection				100cc O/I	
			90 STD	90 TR	90 M	90 SP	90 D	90 TR	90 M	90 SP	100 SP	100 TR
13-1	2621-5002 (EA1-25111)	Kick starter shaft	X	X	X	X						
13-2	2621-3201 263 1-5000 (EA1-25112)	Kick starter shaft Kick starter gear					X	X	X	X	X	X
13-3	2632-5000 (EA1-25113)	Starter ratchet arm	X	X	X	X	X	X	X	X	X	X
13-4	2633-5000 (EA1-25114)	Starter ratchet	X	X	X	X	X	X	X	X	X	X
13-5	2634-5000 (EA1-25115)	Ratchet spring	X	X	X	X	X	X	X	X	X	X
13-6	2635-5000 (EA1-25120)	Stopper ratchet arm	X	X	X	X	X	X	X	X	X	X
13-7	2636-500 1 (EA1-25131)	Kick return spring	X	X	X	X	X	X	X	X	X	X
13-8	2638-3200 (EA1-25132)	Spring spacer	X	X	X	X	X	X	X	X	X	X
13-9	09048-101 (EA1-232 17)	12mm thrust washer	X	X	X	X	X	X	X	X	X	X
13-10	09006-101 (E052 15)	15mm snap ring bef 12Q only	X	X	X	X						
13-11	09041-106 (E072 13)	15mm washer	X	X	X	X	X	X	X	X	X	X
13-12	2680-5000 (EA1-25200)	Kick pedal assy	X	X	X	X	X	X	X	X	X	X
13-14	2683-3011 (E18513)	Kick pedal rubber	X	X	X	X	X	X	X	X	X	X
13-15	2684-5000 (E185 14)	Kick pedal spring	X	X	X	X	X	X	X	X	X	X
13-16	09041-107 (E18515)	10mm washer	X	X	X	X	X	X	X	X	X	X
13-17	055 1-3018	3 x 18 cotter pin	X	X	X	X	X	X	X	X	X	X
13-18	0113-0625	6 x 25mm hex bolt	X	X	X	X	X	X	X	X	X	X
13-19	043 1-0615	6mm lock washer	X	X	X	X	X	X	X	X	X	X



INDEX N O	PART NO.	DESCRIPTION	90cc Without Oil Injection				90cc With Oil Injection				100cc O/I	
			90 STD	90 TR	90 M	90 SP	90 D	90 TR	90 M	90 SP	100 SP	100 TR
14-1	110-5011-CBK EAE-3 1100-OB)	Frame black	X									
	110-5011-MB EAE-31100-OME	Frame blue		X	X							
	110-5031-CBK EA2-31110-OB)	Frame black				X						
	110-5060-CBK 110-5060-MB	Frame black Frame blue					X		X			
	110-5070-FAR	Frame red								X	X	
	See section 15	Pipe frame black										X
14-3	1331-5000 EA1-31320)	Down tube	X	X	X	X						
	1331-5010	Down tube					X	X	X	X	X	
14-4	1313-5000 EA1-31411)	Inner race	X	X	X	X	X	X	X	X	X	
14-5	1311-5000 EA1-31412)	Outer race	X	X	X	X	X	X	X	X	X	
14-6	1611-0316	Ball	X	X	X	X	X	X	X	X	X	
	3318-5000 EA1-31410)	Ball cage-upper	X	X	X	X	X	X	X	X	X	
14-7	1321-5000 EA1-3 1414)	Lock nut	X	X	X	X	X	X	X	X	X	
14-8	1322-5000 EA1-31415)	Adjusting nut	X	X	X	X	X	X	X	X	X	
14-9	1319-5000 EA1-3 14 16)	Race cap	X	X	X	X	X	X	X	X	X	
14-10	1334-5000 EA1-31417)	Muffler bracket	X	X		X	X			X	X	
	1336-5010 EA13-31417)	Stopper bracket			X				X			
14-11	1335-3000 (MO1829)	Rubber stopper	X	X	X	X	X	X	X	X	X	
14-12		License bracket See tail light assembly										

14) STAMPED STEEL FRAME

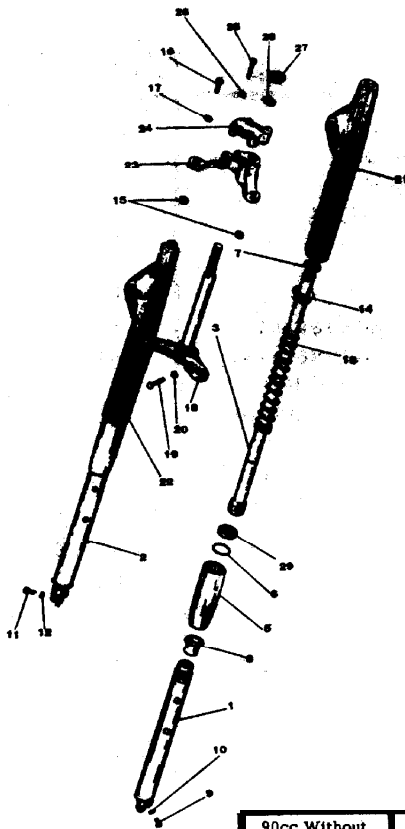
INDEX N O	PART NO.	DESCRIPTION	90cc Without Oil Injection				90cc With Oil Injection				100cc O/I	
			90 STD	90 TR	90 M	90 SP	90 D	90 TR	90 M	90 SP	100 SP	100 TR
14-13	3414-5000 <b>(EA1-31421)</b>	10 x 245 MM bolt	X	X	X	X	X	X	X	X	X	
14-14	3415-5000 <b>(EA1-3 1422)</b>	10 x 200 MM bolt	X	X		X	X	X		X		
	3415-5010 <b>(EA13-41422)</b>	10 x 230 MM bolt			X				X			
	3389-5010 <b>(EA13-31433)</b>	Space collar			X				X			
14-15	3416-5000 <b>(EA1-31423)</b>	Front tank rubber	X	X	X	X	X	X	X	X	X	
14-16	34 17-5000 <b>(EA1-31424)</b>	Rear tank rubber	X	X	X	X	X	X	X	X	X	
14-17	34 19-5000 <b>(EA1-31425)</b>	Tank set bolt	X	X	X	X	X	X	X	X	X	
14-18	<b>3422-5000-MS</b> <b>(EA1-31426)</b>	Mud flap-metal	X	X	X	X	X	X	X	X	X	
14-20	<b>09525-105</b> <b>(EA1-31428)</b>	10 MM blind nut	X	X	X	X	X	X	X	X	X	
14-2 1	3418-5000 <b>(EA1-3 1429)</b>	Rear tank bracket	X	X	X	X	X	X	X	X	X	
14-22	09541-107 <b>(EA1-41432)</b>	10 MM plain washer	X	X	X	X	X	X	X	X	X	
14-23	3354-5001 <b>9EA1-3 1440)</b>	Tool band	X	X	X	X	X	X	X	X	X	
14-24	3433-5000 <b>(EA1-3 1450)</b>	Steering lock	X	X	X	X						
	3433-5010	Steering lock					X	X	X	X	X	
14-25	09525-102 (M01839)	8 MM blind nut	X	X	X	X	X	X	X	X	X	
14-27	8256-3010 <b>(MO1831)</b>	Grommet-tail light	X	X	X	X	X	X	X	X	X	
14-28	3353-3001 <b>(MO1833)</b>	Battery band	X	X	X	X	X	X	X	X	X	
14-29	09511-113	8 x 114 MM hex bolt	X	X	X	X	X	X	X	X	X	
14-30	09511-114	8 x 106 MM hex bolt	X	X	X	X	X	X	X	X	X	
14-3 1	09511-115	8 x 102 MM hex bolt	X	X	X	X	X	X	X	X	X	
14-32	0111-0862	8 x 62 MM hex bolt	X	X	X	X	X	X	X	X	X	
14-33	0111-0816	8 x 16 MM hex bolt	X	X	X	X	X	X	X	X	X	
14-34	0111-0832	8 x 32 MM hex bolt	X	X	X	X	X	X	X	X	X	
14-35	0111-0614	6 x 14 MM hex bolt	X	X	X	X	X	X	X	X	X	
14-36	0111-0610	6 x 10 MM hex bolt	X	X	X	X	X	X	X	X	X	
14-37	0121-0510	5 x 10 MM hex bolt	X	X	X	X	X	X	X	X	X	
14-3 8	0231-0800	8 MM hex nut	X	X	X	X	X	X	X	X	X	
14-39	0231-0600	6 MM hex nut	X	X	X	X	X	X	X	X	X	
14-40	0311-0610	6 x 10 MM screw	X	X	X	X	X	X	X	X	X	
14-4 1	0381-0610	6 x 10 MM screw	X	X	X	X	X	X	X	X	X	
14-42	0411-1022	10 MM flat washer	X	X	X	X	X	X	X	X	X	
14-43	0411-0818	8 MM flat washer	X	X	X	X	X	X	X	X	X	
14-44	0411-0613	6 MM flat washer	X	X	X	X	X	X	X	X	X	
14-45	<b>0431-1025</b>	10 MM lock washer	X	X	X	X	X	X	X	X	X	
14-46	043 1-0820	8 MM lock washer	X	X	X	X	X	X	X	X	X	
14-47	0431-0615	6 MM lock washer	X	X	X	X	X	X	X	X	X	
14-48	0431-0513	5 MM lock washer	X	X	X	X	X	X	X	X	X	
14-49	0451-0611	Tooth washer	X	X	X	X	X	X	X	X	X	
14-50	3427~5010	Tool set pad					X	X	X	X		



15) PIPE FRAME 100 TRAIL

INDEX N O .	PART NO.	DESCRIPTION	90cc Without Oil Injection				90cc With Oil Injection				100cc O/I	
			90 STD	90 TR	90 M	90 SP	90 D	90 TR	90 M	90 SP	100 SP	100 TR
5-1	110-5600 CBK	Frame comp										X
5-2	311-3200	Outer race										X
5-3	314-3200	Upper inner race										X
5-4	315-3200	Lower inner race										X
5-5	13 19-3200	Washer cap										X
5-6	132 1-3200	Washer lock nut										X
5-7	0611-0316	Ball										X
5-8	1365-5600 CBK	Left engine bracket										X
5-9	1365-5600 CBK	Right engine bracket										X
5-10	1416-8000	Front tank cushion rubber										X
5-11	1417-5000	Rear tank cushion rubber										X
5-12	14 19-5000	Tank mounting bolt										X
5-13	1424-3010	Wire harness strap										X
5-14	1711-5010	Footrest bar										X
5-15	1715-5600	Left footrest										X
5-16	1716-5600	Right footrest										X
5-17	172 1-3002	Footrest rubber										X
5-18	1722-5010	Footrest mounting spacer										X
5-19	1723-5010	Footrest mounting bolt										X
5-20	39511-129	12 x 50 hexagon bolt										X
5-21	123 1-0800	Hexagon nut C										X
5-22	1411-0818	Plain washer A										X
5-23	1432-1230	Spring washer										X
5-24	19546-104	10 wave washer										X
5-25	3124-0838	Hexagon bolt B										X
5-26	3114-0862	Hexagon bolt B										X
5-27	39511-101	3 x 108 hexagon bolt										X
5-28	32 1 1-0600	Hexagon nut A										X
5-29	D2 11-0800	Hexagon nut A										X
5-30	09525-105	10 cap nut										X
5-31	0411-0613	Plain washer A										X
5-32	041 1-0818	Plain washer A										X
5-33	043 1-0820	Spring washer										X
5-34	0432-0615	Spring washer										X
5-35	09541-107	Plain washer										X
5-36	09546-102	Wave washer										X
5-37	0111-0842	Hex bolt										X
5-38	09525-102	8 MM cap nut										X
5-39	0411-0818	Plain washer										X

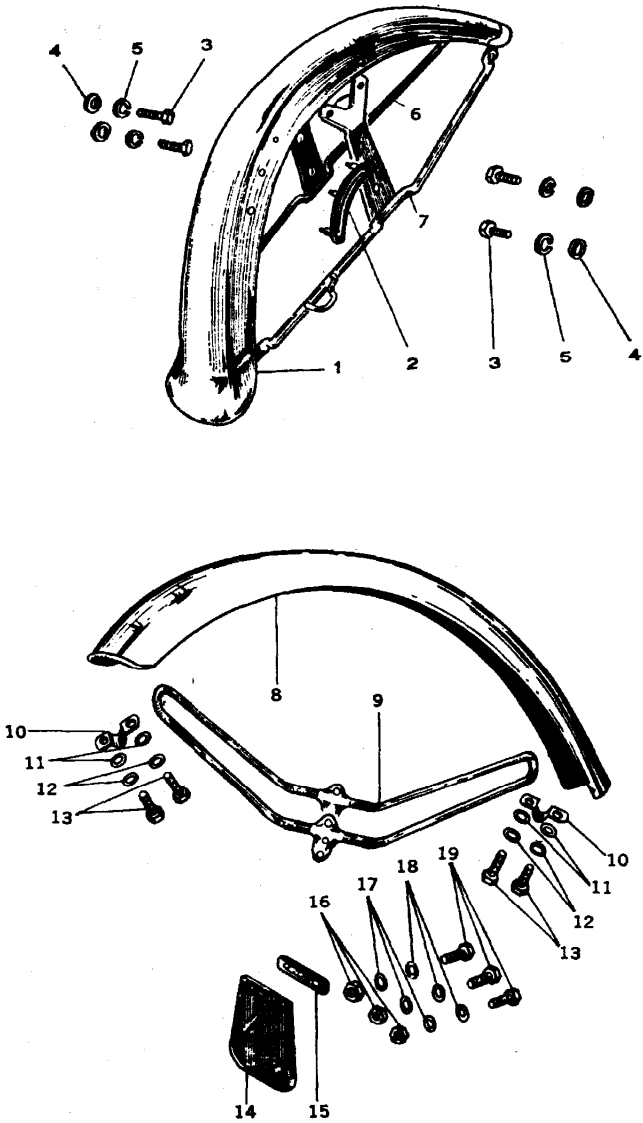
16) TELESCOPIC FRONT FORK



INDEX NO.	PART NO.	DESCRIPTION	90cc Without Oil Injection				90cc With Oil Injection				100cc O/I	
			90 STD	90 TR	90 M	90 SP	90 D	90 TR	90 M	90 SP	100 SP	100 TR
16-0	4100-5000-CBK (EA1-41000-OB)	Front fork assy black	X			X	X					
	4100-5000-OMB (EA1-41000-OM)	Front fork assy blue		X				X				
	4100-5020-MB (EA13-41000-ON)	Front fork assy blue			X				X			
	4100-5000-FAR	Front fork assy red								X	X	
	4100-5600-MB	Front fork assy blue										X
16-1	4111-5001-MS (EA1-51110-MS)	Outer tube left	X	X	X	X	X	X	X	X	X	
	4111-5011-MS	Outer tube left										X
16-2	4131-5001-MS (EA1-41210-MS)	Outer tube right	X	X	X	X	X	X	X	X	X	
	4131-5011-MS	Outer tube right										X
16-3	4113-5001 (EA1-41120)	Inner tube comp	X	X	X	X	X	X	X	X	X	
	4113-5010	Inner tube comp										X
16-5	4114-5000 (EA1-41131)	Outer tube nut	X	X	X	X	X	X	X	X	X	
	4114-3210	Outer tube nut										X
16-6	09566-102 (EA1-41132)	33 MM O ring	X	X	X	X	X	X	X	X	X	
	09566-103	29 MM O ring										X
16-7	4115-5000 (EA1-41134)	Spring seat	X	X	X	X	X	X	X	X	X	
	4115-3210	Spring seat										X
16-8	4116-5000 (EA1-41141)	Slide bushing	X	X	X	X	X	X	X	X	X	
		Not required										X
16-9	09531-101 (EA1-41161)	4 x7 MM screw	X	X	X	X	X	X	X	X	X	
	0111-0508	5 x 8 MM hex bolt										X

INDEX NO.	PART NO.	DESCRIPTION	90cc Without Oil Injection				90cc With Oil Injection				100cc O/I	
			90 STD	90 TR	90 M	90 SP	90 D	90 TR	90 M	90 SP	100 SP	100 TR
16-10	4118-5000 (EA1-41162)	Drain plug gasket	X	X	X	X	X	X	X	X	X	
16-11	4118-3210 091511-I 16 (EA1-41251)	Drain plug gasket 8 x 25 hex bolt	X	X	X	X	X	X	X	X	X	X
16-12	09511-125 0431-0820 04121-0816	8 x 32 hex bolt 8 MM lock washer 8 Plain washer	X	X	X	X	X	X	X	X	X	X
16-13	4121-5000 (EA1-41171)	Main spring	X	X		X	X	X		X	X	
	4121-5010 (EA13-41171)	Mah spring			X				X			
	41121-5600	Main spring										X
16-14	41122-5000 (EA1-41172)	Cover guide	X	X	X	X	X	X	X	X	X	
	4174-5600	covet guide										X
16-15	4123-5000 (EA1-41181)	Inner tube packing	X	X	X	X	X	X	X	X	X	
16-16	09566-104 4124-5000 (EA1-41182)	10 MM 0 ring Upper bridge bolt	X	X	X	X	X	X	X	X	X	X
	4124-3210	Upper bridge bolt										X
16-17	09541-111 (EA1-41183)	Plain washer	X	X	X	X	X	X	X	X	X	
	09541-108	Plain washer										X
16-18	4151-5000-CBK (EA1-413 10)	Lower bridge	X	X	X	X	X	X	X	X	X	
	4151-3220-CBK	Lower bridge										X
16-19	019511-137 (EA1-41321)	10 x 25 MM hex bolt	X	X	X	X	X	X	X	X	X	
16-20	0131-1028 0431-1025 0421-0816	10 x 28 MM hex bolt 10 MM lock washer 8 MM lock washer	X	X	X	X	X	X	X	X	X	X
16-21	4171-5000-CBK (EA1-41410-OB)	Left fork cover black	X			X	X					
	4171-5000-OM1 (EA1-41410-OM)	Left fork cover blue		X	X		X	X				
	4171-5000-FAR	Left fork cover red							X	X		
16-22	4171-5600-MB 4181-5000-CBK (EA1-41420-OB)	Left fork cover blue Right fork cover black	X			X	X					X
	4181-5000-OM1 (EA1-41420-OM)	Right fork cover blue		X	X		X	X				
	4181-5000-FAR	Right fork cover red							X	X		
16-23	4181-5600-MB 41161-5000 (EA1-41511)	Right fork cover blue Upper bridge	X	X	X	X	X	X	X	X	X	X
	41161-3210	Upper bridge										X
16-24	4162-5000 (EA1-41521)	Handle bar holder	X	X	X	X	X	X	X	X	X	
	41162-3200	Handle bar holder										X
16-25	C1142-0836 (EA1-41541)	Bolt handle holder	X	X	X	X	X	X	X	X	X	
	09511-130	8 x 35 MM hex bolt										X
16-26	C1411-0818 0421-0816	8 MM plain washer 8 MM plain washer	X	X	X	X	X	X	X	X	X	X
16-27	41164-5000 (EA1-41551)	Steering head nut	X	X	X	X	X	X	X	X	X	
	09525-105	Steering head nut										X
16-28	4165-5000 (EA1-41552)	Head nut washer	X	X	X	X	X	X	X	X	X	
	09546-102	Wave washer										X
16-29	C19590-108 (EA1-41133)	27 MM oil seal	X	X	X	X	X	X	X	X	X	
	09590-109	27 MM oil seal										X
	EXCLUSIVE PAR	FOR BS/100 TRAIL										
	4176-5600	Fork boot band										X
	03 1 1-0508	Pan head screw										X
	0432-0513	5 MM lock washer										X
	4177-5600	Rubber boot										X
	4178-5600	Boot holder upper										X
	4182-5000	Cable clip										X
	03 1 1-0608	6 x 8 MM screw										X
	043 1-061 5	6 MM lock washer										X

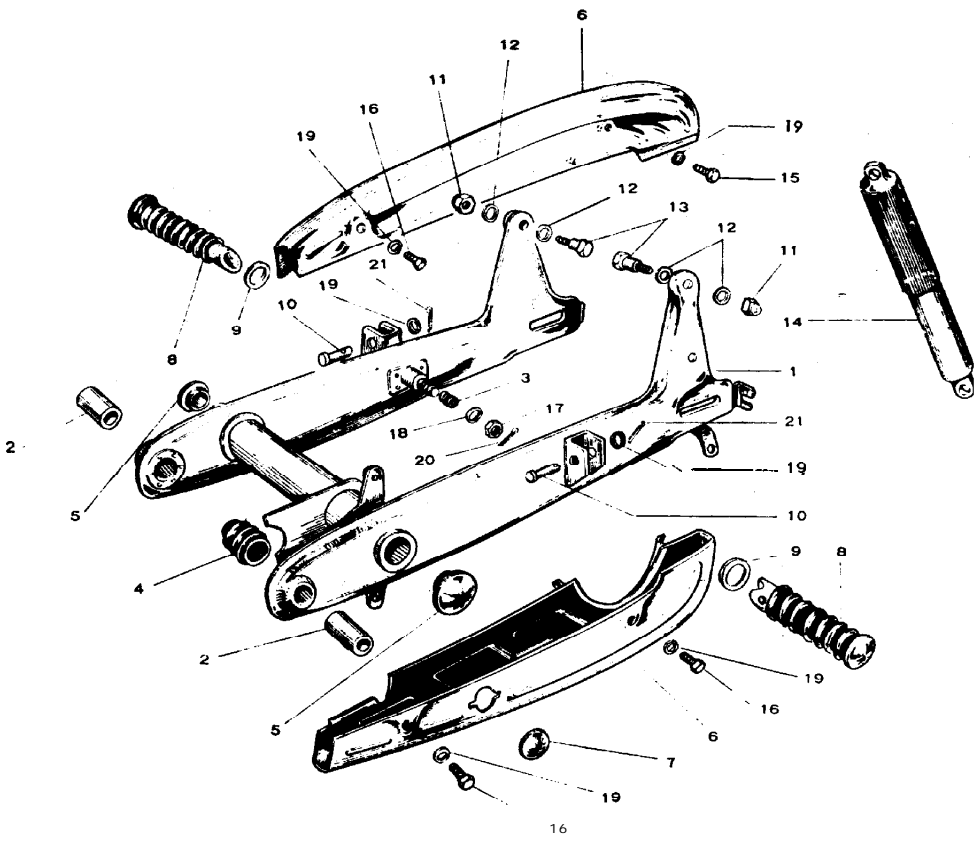
# 17) FRONT MUDGUARD



## 17) FRONT MUDGUARD

INDEX NO.	PART NO.	DESCRIPTION	90cc Without Oil Injection				90cc With Oil Injection				100cc O/I	
			90 STD	90 TR	90 M	90 SP	90 D	90 TR	90 M	90 SP	100 SP	100 TR
			17-1	4410-5002-CBK (EAE-42 100)	Front fender black	X						
	4410-5012-XCI (EAE-91710)	Front fender chrome				X	X			X	X	
17-2	41432-5000 (EA1-4222 1)	Protector	X			X	X			X	X	
17-3	0111-0608	6 x 8 MM hex bolt	X			X	X			X	X	
17-4	0411-0613	6 MM flat washer	X			X	X			X	X	
17-5	0143 1-0615	6 MM lock washer										
17-6	4421-5000-CBK (EA1-42120)	Left stay black	X									
	41421-5010 (EA1-9 1720)	Left stay chrome				X	X			X	X	
17-7	4422-5000-CBK (EA1-42 130)	Right stay black	X									
	4422-5010 (EA1-91730)	Right stay chrome				X	X			X	X	
17-8	4411-5011-XCI (EAT1-42 110) (EA13-42110)	Front fender chrome		X	X			X	X			
	441 1-5600-XCI	Front fender										X
17-9	4425-5011-XCI (EAT1-42120)	Front fender stay		X	X			X	X			
	4425-5600-XCI	Front fender stay										X
17-10	4428-5010 (EAT1-42 13 1)	Bracket band		X	X			X	X			
17-11	0411-0613	6 MM flat washer		X	X			X	X			X
17-12	043 1-06 15	6 MM lock washer		X	X			X	X			X
17-13	0111-0614	6 x 14 MM hex bolt		X	X			X	X			X
17-14	4451-5010 (EA1-91751)	Mudflap			X				X			
17-15	4452-5010 (EA1-91752)	Set band			X				X			
17-16	022 1-0500	5 MM hex nut			X				X			
17-17	043 1-0513	5 MM lock washer			X				X			
17-18	0411-0512	5 MM flat washer			X				X			
17-19	0311-0510	5 x 10 MM screw			X				X			

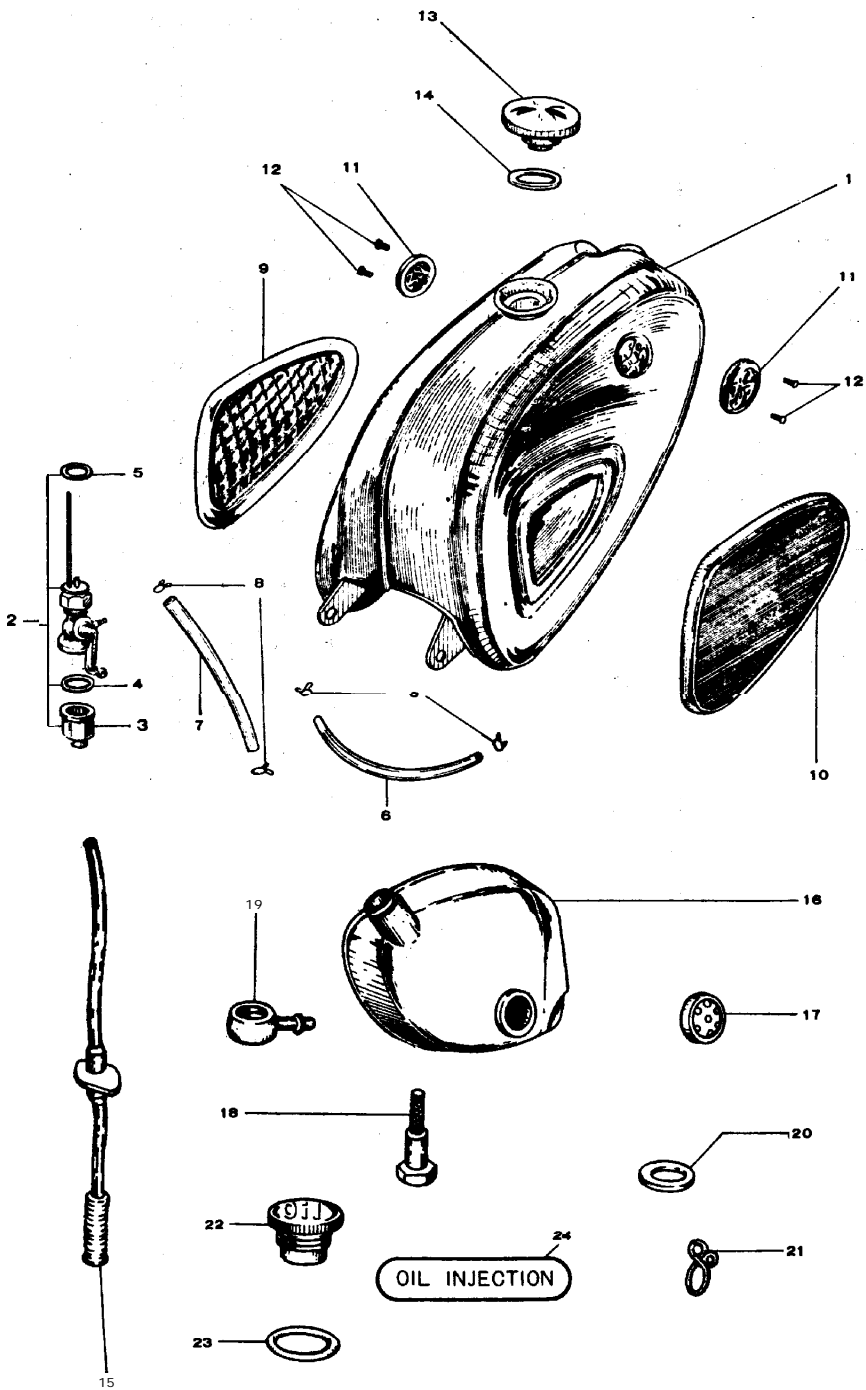
# 18) REAR FRAME - CHAIN CASE - SUSPENSION



18) REAR FRAME-CHAIN GUARD-  
REAR SUSPENSION

INDEX N O	PART NO.	DESCRIPTION	90cc Without Oil Injection				90cc With Oil Injection				100cc O/I		
			90 STD	90 TR	90 M	90 SP	90 D	90 TR	90 M	90 SP	100 SP	100 TR	
18-1	4810-5000-CBK (EA1-47100-OB)	Rear fork <b>comp</b> black	X				X						
	4810-5000-MB (EA1-47100-OMI)	Rear fork <b>comp</b> blue		X				X					
	4810-3200-MB (GB1-47110-OMI)	Rear fork <b>comp</b> blue			X				X				
	4810-5021-CBK (EA2-47100-OB)	Rear fork <b>comp</b> black				X							
	4810-5021-FAR	Rear fork <b>comp</b> red									X	X	
	4810-5600-CBK	Rear <b>for k comp</b> black									X	X	X
18-2	4851-5000 (EA1-47211)	Torsion rubber	X	X	X	X	X	X	X	X	X	X	X
18-3	41854-5000 (EA1-472 12)	Spring brake link	X	X	X		X	X	X				
18-4	4853-300 1 (MO3 172)	Rubber bushing	X	X	X	X	X	X	X	X	X	X	
18-5	4852-5000 (EA1-472 13)	Cap-rear frame	X	X	X	X	X	X	X	X	X	X	
18-6	4701-5000-MS (EA1-45100)	Chain case assembly	X				X						
	4751-5020 (EAT1-45100)	Half chain case		X				X					
	41751-5030 (EA13-45100)	Half chain case			X				X				
	4751-5010 (EA1-91800)	Half chain case				X				X	X		
	4751-5600-MS	Half chain case											X
18-7	4731-3000 (MO336 1)	Cap-chain case	X				X						
18-8	3702-5000 (EA1-67300)	Tandem footrest	X	X		X	X	X		X	X	X	
	3702-3020 (M4544)	Tandem-footrest			X				X				
18-9	3762-5000 (EA1-67322)	Footrest washer	X	X		X	X	X		X	X	X	
18-10	3763-5000 (EA1-67323)	Footrest pin	X	X		X	X	X		X	X	X	
18-11	09525-105	10 MM cap nut	X	X	X	X	X	X	X	X	X	X	X
18-12	09541-107	10 MM washer	X	X	X	X	X	X	X	X	X	X	X
18-13	0123-1040	10 x 40 MM hex bolt	X	X	X	X	X	X	X	X	X	X	X
18-14	4901-5000-CBK (EA1-48100-OB)	Rear suspension black	X				X	X					
	4901-5000-MB (EA1-48100-OMI)	Rear suspension blue		X	X			X	X				
	4901-5030-FAR	Rear suspension red									X	X	
	4901-5600-MB	Rear suspension blue											X
18-15	0111-0618	6 x 18 MM hex bolt	X	X	X	X	X	X	X	X	X	X	X
18-15	0111-0608	6 x 8 MM hex bolt	X	X	X	X	X	X	X	X	X	X	X
18-17	023 1-0800	8 MM hex nut	X	X	X	X	X	X	X	X	X	X	X
18-18	0411-0818	8 MM flat washer	X	X	X	X	X	X	X	X	X	X	X
18-19	0411-0613	6 MM flat washer	X	X	X	X	X	X	X	X	X	X	X
18-20	0551-2020	2.0 x 20 cotter pin	X	X	X	X	X	X	X	X	X	X	X
18-21	0551-1612	1.6 x 12 cotter pin	X	X	X	X	X	X	X	X	X	X	X

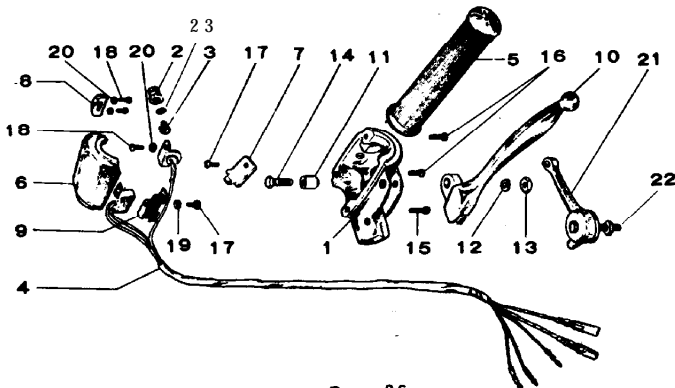
19) FUEL TANK - FUEL COCK - OIL TANK



INDM: N O	PART NO.	DESCRIPTION	90cc Without Oil Injection				90cc With Oil Injection				100cc C/I				
			90 STD	90 TR	90 M	90 SP	90 D	90 TR	90 M	90 SP	100 SP	100 TR			
19-1	5110-5001-CBK (EA1-51110-CBK)	Fuel tank black	X												
	5110-5001-MB (EA1-51110-MB)	Fuel tank blue		X	X										
	5110-5011-CBK (EA2-51110-OB)	Fuel tank black				X									
	5110-3200-CBK	Fuel tank black					X								
	5110-3200-MB	Fuel tank blue						X	X						
	5110-5011-FAR	Fuel tank red								X	X				
	5110-5011-MB	Fuel tank blue													X
19-2	5103-5000 (EA1-52100)	Fuel cock assy	X	X	X	X	X	X	X	X	X	X	X	X	X
19-3	5182-5000 (EA1-52113)	Fuel bowl	X	X	X	X	X	X	X	X	X	X	X	X	X
19-4	5183-3000 (MO7163)	Packing bowl	X	X	X	X	X	X	X	X	X	X	X	X	X
19-5	5184-3000 (MO7166)	Fuel cock gasket	X	X	X	X	X	X	X	X	X	X	X	X	X
19-6	5186-5000 (EA1-5212 1)	Tank connecting tube	X	X	X	X	X	X	X	X	X	X	X	X	X
19-7	5172-5000 (EA1-52122)	Fuel tube	X	X	X	X	X	X	X	X	X	X	X	X	X
19-8	5187-3004 (MO7183)	Clip-fuel tube	X	X	X	X	X	X	X	X	X	X	X	X	X
19-9	5141-5000 (EA1-51211)	Left knee grip	X	X	X										
	5141-5010 (EA2-51211)	Left knee grip				X					X	X	X	X	X
	5141-3200 (GB1-51211)	Left knee grip					X	X	X						
19-10	5142-5000 (EA1-51212)	Right knee grip	X	X	X										
	5142-5010 (EA2-51212)	Right knee grip				X					X	X	X	X	X
	5142-3200 (GB1-51212)	Right knee grip					X	X	X						
19-11	5143-5000 (EA1-51213)	Side mark	X	X	X		X	X	X			X	X	X	X
19-12	5144-5020	"Bridgestone" decal										X	X	X	X
19-13	0311-0306	3 x 6 MM screw	X	X	X		X	X	X						
	5160-3002 (MO7105)	Tank cap 2-1/4" neck	X	X	X										
	5102-3200 (GB1-51300)	Tank cap 1-5/8" neck	X	X	X	X	X	X	X	X	X	X	X	X	X
19-14	5171-3001 (MO7152)	Packing cap 2-1/4	X	X	X										
	5171-3100 (GA1-51271)	Packing cap 1-5/8	X	X	X	X	X	X	X	X	X	X	X	X	X
19-15	5533-5010	Oil tube C					X	X	X	X	X	X	X	X	X
19-16	5510-5010-CBI	Oil tank black					X								
	5510-5010-MB	Oil tank blue						X	X			X	X		
	5510-5010-FAR	Oil tank red										X	X		
	5510-8010-MB	Oil tank blue													X
19-17	5531-8000	Oil gauge						X	X	X	X	X	X	X	X
	5531-5010	Oil gauge													X
19-18	5532-5010	Oil tank filter					X	X	X	X	X	X	X	X	X
19-19	5534-5010	Union connector					X	X	X	X	X	X	X	X	X
19-20	09564-101	10 MM fiber gasket					X	X	X	X	X	X	X	X	X
19-21	5187-3004	Fuel tube clip					X	X	X	X	X	X	X	X	X
19-22	5560-5010	Oil tank cap					X	X	X	X	X	X	X	X	X
19-23	09566-108	27 MM O ring					X	X	X	X	X	X	X	X	X
19-24	9116-5010	Oil injection label					X	X	X	X	X	X	X	X	X

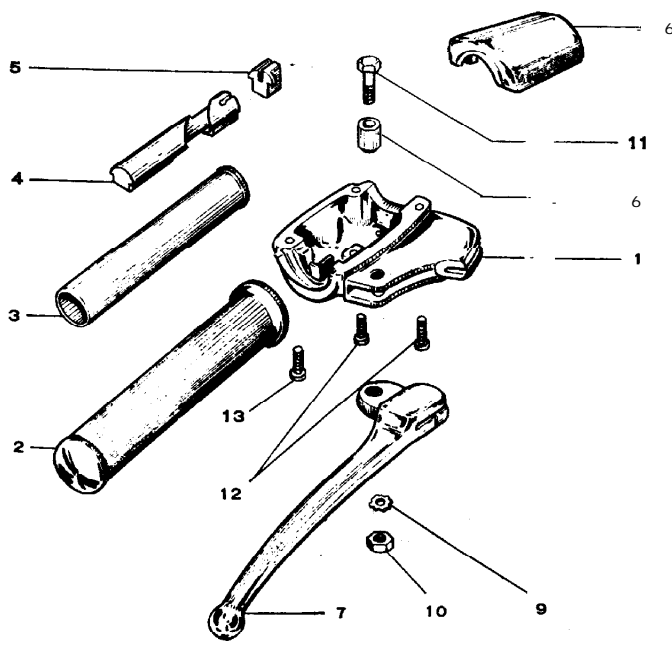
20) CLUTCH GRIP

INDEX N O...	PART NO.	DESCRIPTION	90cc Without Oil Injection				90cc With Oil Injection				100cc O/I		
			90 STD	90 TR	90 M	90 SP	90 D	90 TR	90 M	90 SP	100 SP	100 TR	
20-0	5101-5000 (EA1-61100)	Clutch grip assembly	X	X	X	X	X	X	X	X	X		
20-1	5101-5600 5111-5000 (EA1-61111)	Clutch grip assembly Lever holder left	X	X	X	X	X	X	X	X	X		X
	5111-5600	Lever holder left											X
	6126-5600	Wire adjuster											X
	6127-5600	Adjuster lock nut											X
20-2	6113-3100 (GA1-61113)	Horn button	X	X	X	X	X	X	X	X	X	X	X
20-3	6114-3100 (GA1-61114)	Spring-horn button	X	X	X	X	X	X	X	X	X	X	X
20-4	6115-5000 (EA1-61120)	Wire left assembly	X	X	X	X	X	X	X	X	X	X	X
20-5	6123-3100 (GA1-61130)	Left grip rubber	X	X	X	X	X	X	X	X	X	X	
	6123-5600	Left grip rubber											X
20-6	6121-5000 (EA1-61141)	Holder cover left	X	X	X	X	X	X	X	X	X	X	X
20-7	6116-3100 (GA1-61142)	Wire clamp left	X	X	X	X	X	X	X	X	X	X	X
20-8	6119-5000 (GA1-61143)	Knob-switch.	X	X	X	X	X	X	X	X	X	X	X
20-9	6117-3100 (GA1-61144)	Switch clamp left	X	X	X	X	X	X	X	X	X	X	X
20-1	6122-3011 (M452 12)	Clutch lever	X	X	X	X	X	X	X	X	X	X	X
20-1	6124-3100 (GA1-61261)	Collar-lever pivot	X	X	X	X	X	X	X	X	X	X	X
20-1	0451-0510 (GA1-61261)	Toothed washer	X	X	X	X	X	X	X	X	X	X	X
20-1	0221-0500	5 MM hex nut	X	X	X	X	X	X	X	X	X	X	X
20-1	0111-0518	5 x 18 MM hex bolt	X	X	X	X	X	X	X	X	X	X	X
20-1	0311-0518	5 x 18 MM screw	X	X	X	X	X	X	X	X	X	X	X
20-1	0311-0514	5 x 14 MM screw	X	X	X	X	X	X	X	X	X	X	X
20-1	0311-0306	3 x 6 MM screw	X	X	X	X	X	X	X	X	X	X	X
20-1	0361-0206	2 x 6 MM screw	X	X	X	X	X	X	X	X	X	X	X
20-1	0431-0307	3 MM lock washer	X	X	X	X	X	X	X	X	X	X	X
20-2	0431-0205	2 MM lock washer	X	X	X	X	X	X	X	X	X	X	X
20-2	6103-5000 (EA1-61170)	Starter lever assy	X	X	X	X	X	X	X	X	X	X	X
20-2	09511-119	5 x 36 MM hex bolt	X	X	X	X	X	X	X	X	X	X	X
20-2	6112-3100	Horn contact	X	X	X	X	X	X	X	X	X	X	X



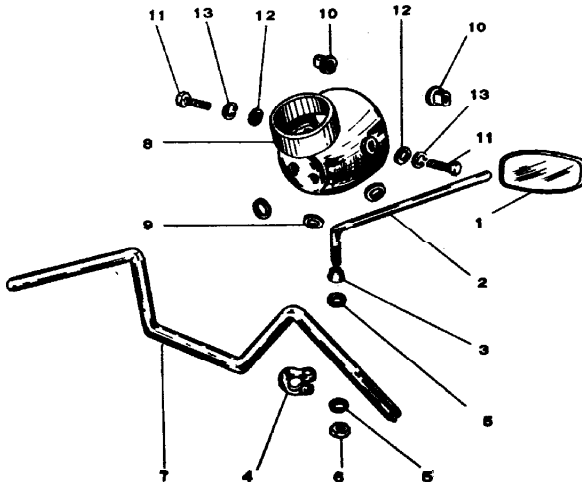
21) THROTTLE GRIP

INDEX N O	PART NO.	DESCRIPTION	90cc Without Oil Injection				90cc With Oil Injection				100cc O/I	
			90 STD	90 TR	90 M	90 SP	90 D	90 TR	90 M	90 SP	100 SP	100 TR
21-0	6104-5020 (EA1-61200)	Throttle grip assy	X	X	X	X	X	X	X	X	X	
21-1	6104-5600 6141-3101 (GA1-61211)	Throttle grip assy Lever holder right	X	X	X	X	X	X	X	X	X	X
	6141-5600 6126-5600 5127-5600	Lever holder right Wire adjuster Adjuster lock nut										X X X
21-2	5153-3100 (GA1-61230)	Right grip rubber	X	X	X	X	X	X	X	X	X	
	5153-5600	Right grip rubber										X
21-3	6154-3100 (GA1-61231)	Throttle grip pipe	X	X	X	X	X	X	X	X	X	
21-4	6155-3100 9GA1-61232)	Sliding shoe	X	X	X	X	X	X	X	X	X	X
21-5	6156-3100 (GA1-61233)	Cable stopper	X	X	X	X	X	X	X	X	X	X
21-6	6151-5020 (EAE-6 1241)	Right holder cover	X	X	X	X	X	X	X	X	X	X
21-7	6152-3100 (GA1-61260)	Front brake lever	X	X	X	X	X	X	X	X	X	X
21-8	6124-3100 (GA1-61261)	Collar-lever pivot	X	X	X	X	X	X	X	X	X	X
21-9	0451-0510	Toothed washer	X	X	X	X	X	X	X	X	X	X
21-10	0221-0500	5 MM hex nut	X	X	X	X	X	X	X	X	X	X
21-11	0111-0518	5 x 18 MM hex bolt	X	X	X	X	X	X	X	X	X	X
21-12	0311-0518	5 x 18 MM screw	X	X	X	X	X	X	X	X	X	X
21-13	0311-0514	5 x 14 MM screw	X	X	X	X	X	X	X	X	X	X



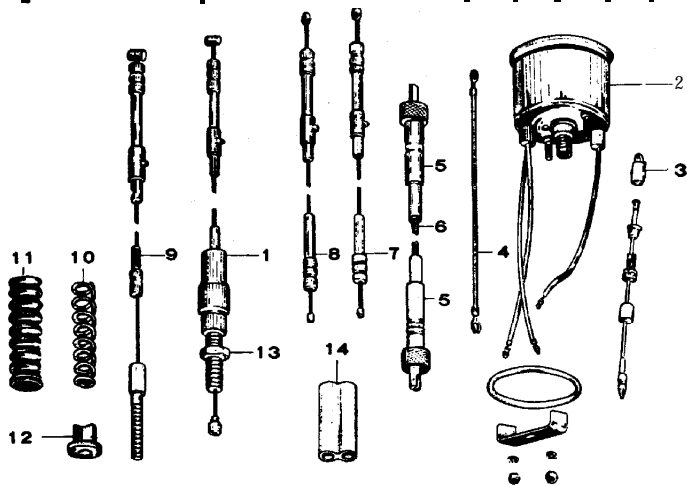
22) HEAD COVER - HANDLE BAR

INDEX N O	PART NO.	DESCRIPTION	90cc Without Oil Injection				90cc With Oil Injection				100cc O/I	
			90 STD	90 TR	90 M	90 SP	90 D	90 TR	90 M	90 SP	100 SP	100 TR
22-0	4601-3101 (GA1-44100)	Rear view mirror	X	X	X	X	X	X	X	X	X	X
22-1	4610-3100 (GA1-44110)	Mirror reflector	X	X	X	X	X	X	X	X	X	X
22-2	4621-3101 (GA1-44121)	Mirror stay	X	X	X	X	X	X	X	X	X	X
22-3	GA1-44122	Set nut	X	X	X	X						
22-4	4622-3102 (GA1-44140)	Set band	X	X	X	X	X	X	X	X	X	X
22-5	043 1-0820	8 MM lock washer	X	X	X	X	X	X	X	X	X	X
22-6	023 1-0800	8 MM hex nut	X	X	X	X	X	X	X	X	X	X
22-7	4511-5000 (EA1-43111)	Handle bar	X	X		X	X	X		X		
	4511-5040 (EA13-43111)	Handle bar			X				X			X
22-8	8111-5000-CBK (EA1-81110-OB)	Head cover plastic Black	X			X						
	8111-5000-MB (EA1-81110-OM)	Head cover plastic Blue		X	X							
	8111-5020-CBK (EAE-81111-OB)	Head cover metal Black	X			X	X					
	8111-5020-MB (EAE-81111-OM)	Head cover metal Blue		X	X			X	X			X
	8111-5020-FAR	Head cover metal red								X	X	
22-9	8125-5000 (EA1-81112)	Rubber grommet	X	X	X	X						
	8 125-5020	Rubber grommet	X	X	X	X	X	X	X	X	X	X
22-10	8126-5000 (EA1-81113)	Head cover set nut	X	X	X	X						
22-11	0111-0816	8 x 16 MM hex bolt	X	X	X	X	X	X	X	X	X	X
22-12	0411-0818	8 MM flat washer	X	X	X	X	X	X	X	X	X	X
22-13	043 1-0820	8 MM lock washer	X	X	X	X	X	X	X	X	X	X

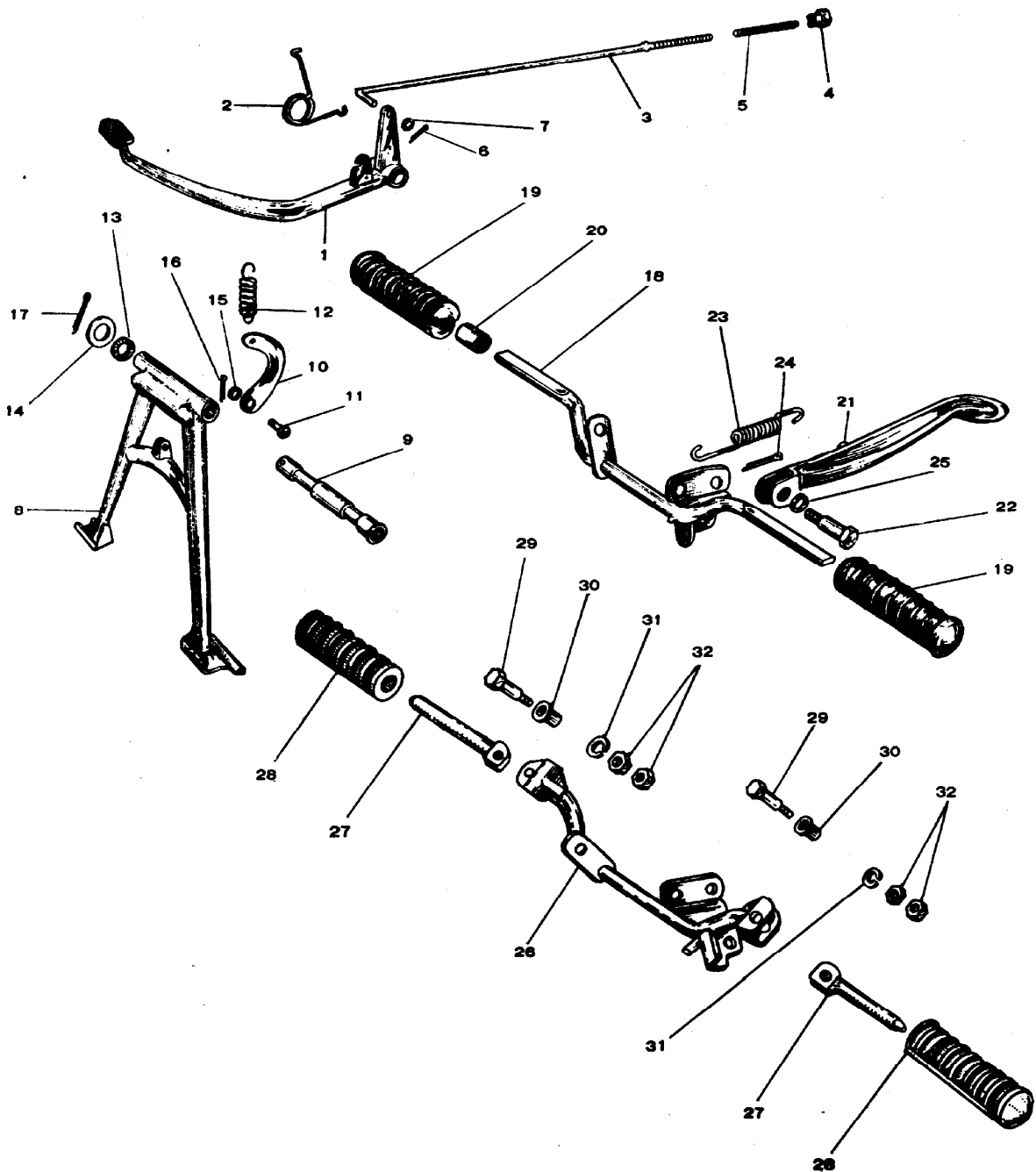


23) SPEEDOMETER - CABLES

INDEX N O	PART NO.	DESCRIPTION	90cc Without Oil Injection				90cc With Oil Injection				100cc O/I	
			90 STD	90 TR	90 M	90 SP	90 D	90 TR	90 M	90 SP	100 SP	100 TR
23-1	6 186-5000 (EA1-22240)	Clutch cable	X	X	X	X						
	6 186-5040	Clutch cable					X	X	X	X		
23-2	6 186-5600, 8401-5011 (EAE-6 1300)	Clutch cable Speedometer	X	X	X	X						X
	8401-5030 8429-5010	Speedometer Speedometer set spring (for metal head cover)	X	X	X	X	X	X	X	X	X	X
23-3	8424-3010 (M253 15)	Bulb-speedometer	X	X	X	X	X	X	X	X	X	X
23-4	8834-5000 (EA1-61321)	Earth wire	X	X	X	X	X	X	X	X	X	X
23-5	6171-5000 (EA1-61510)	Speedometer cable	X	X	X	X	X	X	X	X	X	X
23-6	9411-5000 (EA1-61512)	Inner cable	X	X	X	X	X	X	X	X	X	X
23-7	6 176-5000 (EA1-61520)	Throttle cable	X	X	X							
	6 176-5040 (EA24-61520)	Throttle cable				X						
	6176-5071	Throttle cable					X	X	X			
23-8	6176-5081	Throttle cable								X		X
	6 178-5000 (EA1-61530)	Starter cable	X	X	X		X	X	X			
	6178-5030 (EA2-61530)	Starter cable				X				X	X	X
23-9	6181-5000 (EA1-61541)	Brake cable	X	X	X	X	X	X	X	X	X	
	6181-5600	Brake cable										X
23-10	6182-5000 (EA1-6 1542)	Cable return spring	X	X	X	X	X	X	X	X	X	X
23-11	6183-5000 (EA1-61543)	Rubber boot	X	X	X	X	X	X	X	X	X	X
23-12	3832-3000 (M04332)	Brake adjusting nut	X	X	X	X	X	X	X	X	X	X
23-13	023 1-0800	8 MM hex nut	X	X	X	X	X	X	X	X	X	X
23-14	6 189-5000 (EA1-61562)	Cable clamp										

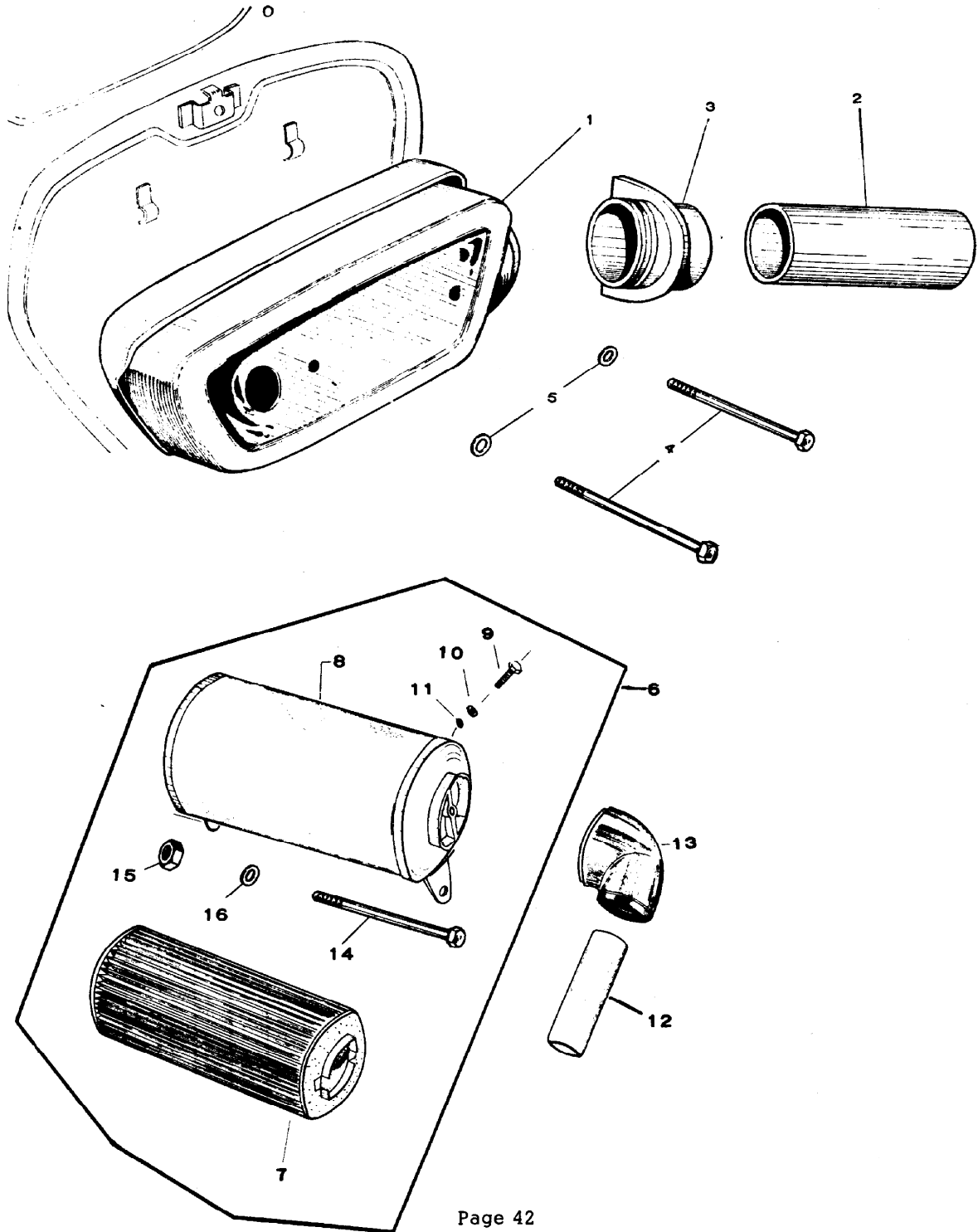


24) BRAKE PEDAL - STAND - FOOTREST - SIDE STAND



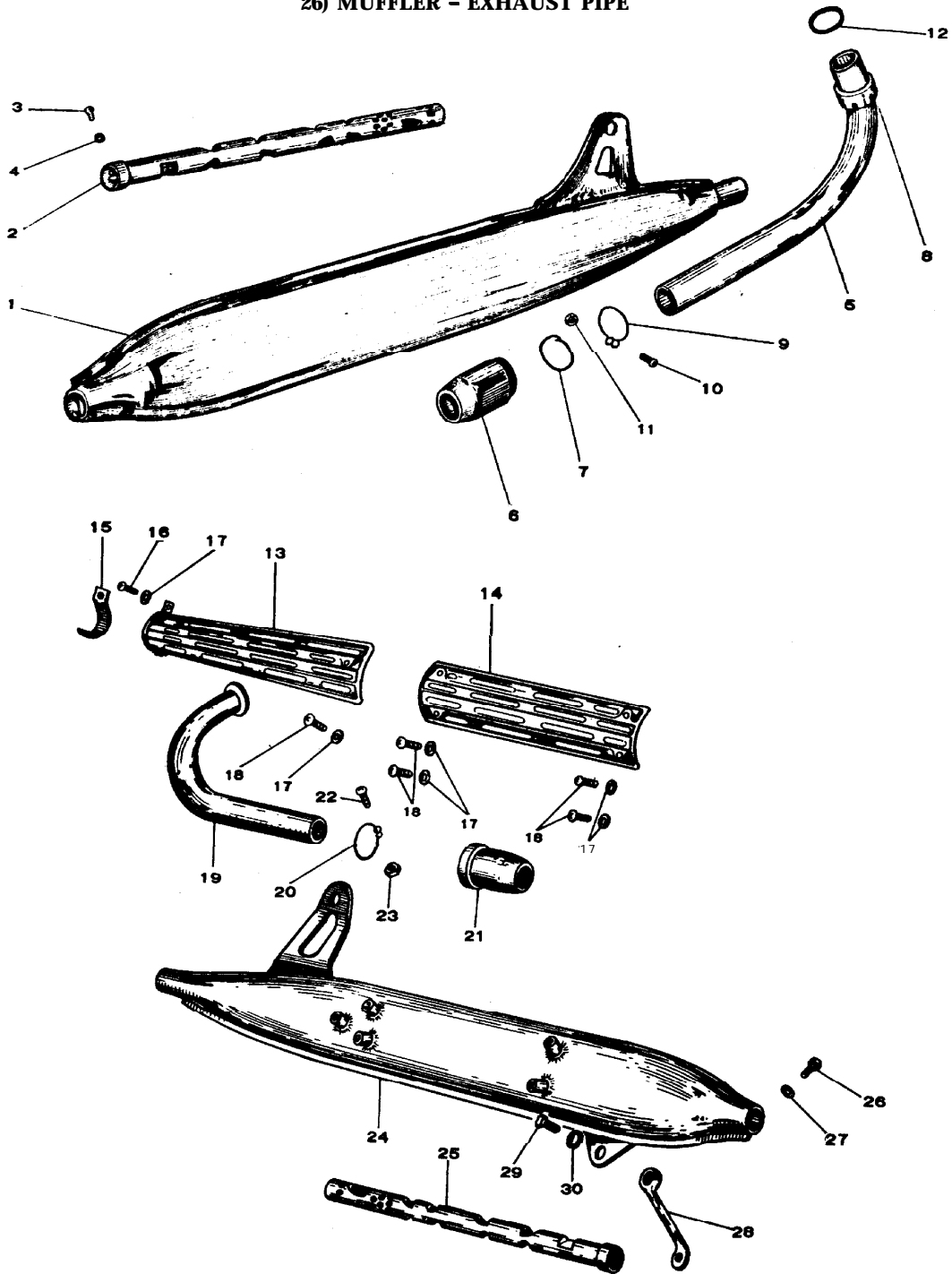


25) AIR CLEANER



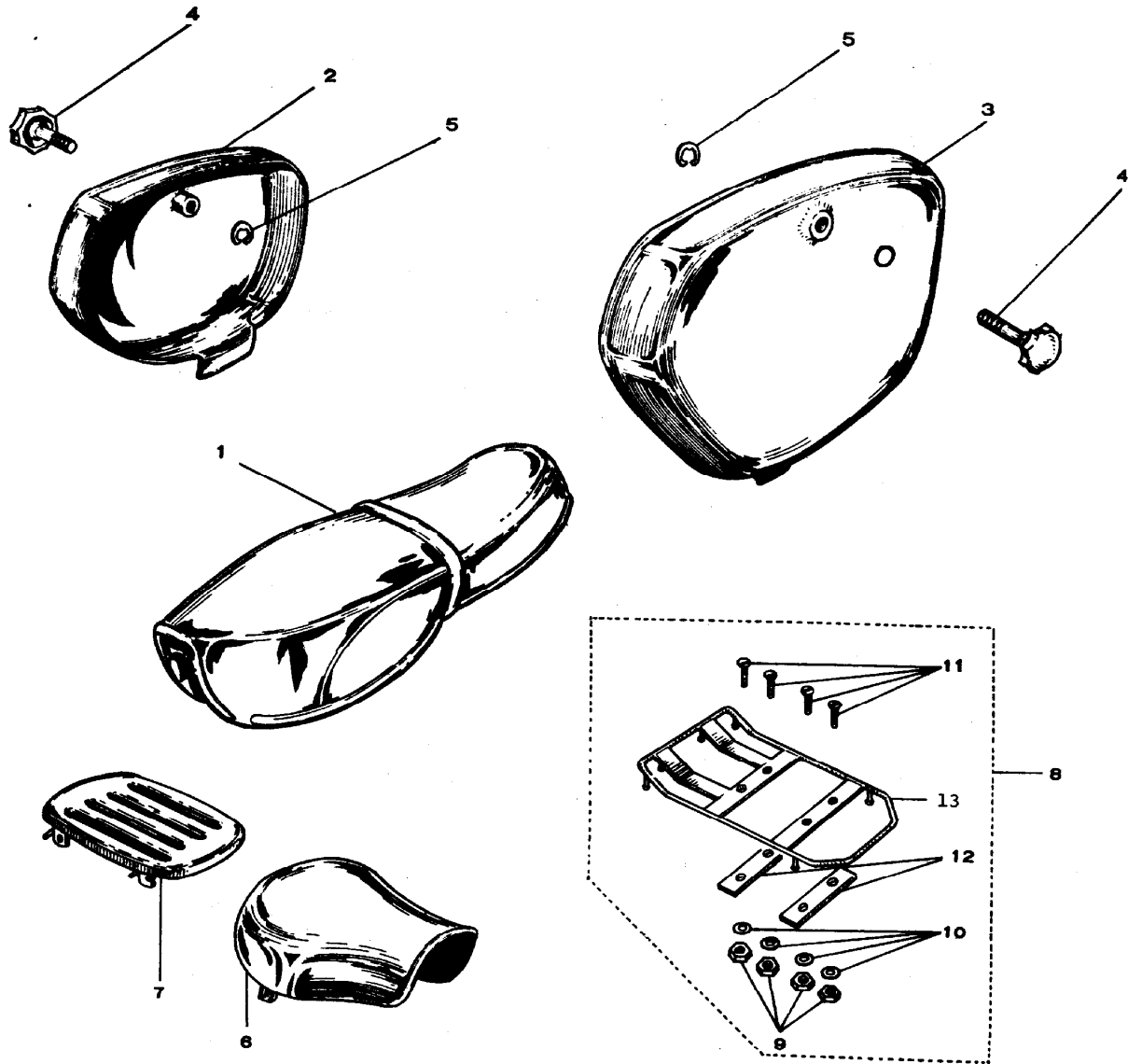
INDEX N O .	PART NO.	DESCRIPTION	90ccWithout Oil Injection				90cc With Oil Injection				100cc O/I		
			90 STD	90 TR	90 M	90 SP	90 D	90 TR	90 M	90 SP	100 SP	100 TR	
			25-1	5211-5000 (EA1-62110)	Air cleaner element (Old style)	X	X	X					
	5211-5001	Air cleaner element (New style)	X	X	X								
	5211-5010	Air cleaner element				X							
	5211-5030	Air cleaner element					X	X	X	X		X	
25-2	5241-5000 (EA1-62121)	Air pipe	X	X	X								
	6241-5010 (EA2-62121)	Air pipe				X							
	6241-5020	Air pipe					X	X	X	X			
25-3	6242-5000 (EA1-62122)	Joint rubber	X	X	X								
	6242-5010 (EA2-62122)	Joint rubber				X							
	6242-5020	Joint rubber					X	X	X	X		X	
25-4	0111-0665	6 x 65 MMhex bolt	X	X	X	X							
	09531-102	6 x 6 MM screw					X	X	X	X		X	
25-5	0411-0613	6 MM flatwahser	X	X	X	X	X	X	X	X		X	
25-6	6201-5600	Air cleaner assy											X
25-7	6211-5600	Element-air cleaner											X
25-8	6221-5600	Cleaner case											X
25-9	0311-0408	4 x 8 MM screw											X
25-10	0411-0410	4 MM flat washer											X
25-11	0431-0410	4 MM lock washer											X
25-12	6241-5600	Air pipe											X
25-13	6242-8000	Joint-air pipe											X
25-14	09511-133	8x108 hex bolt											X
25-15	0211-0800	8 MM hex nut											X
25-16	0411-0818	8 MM flat washer											X

# 26) MUFFLER - EXHAUST PIPE

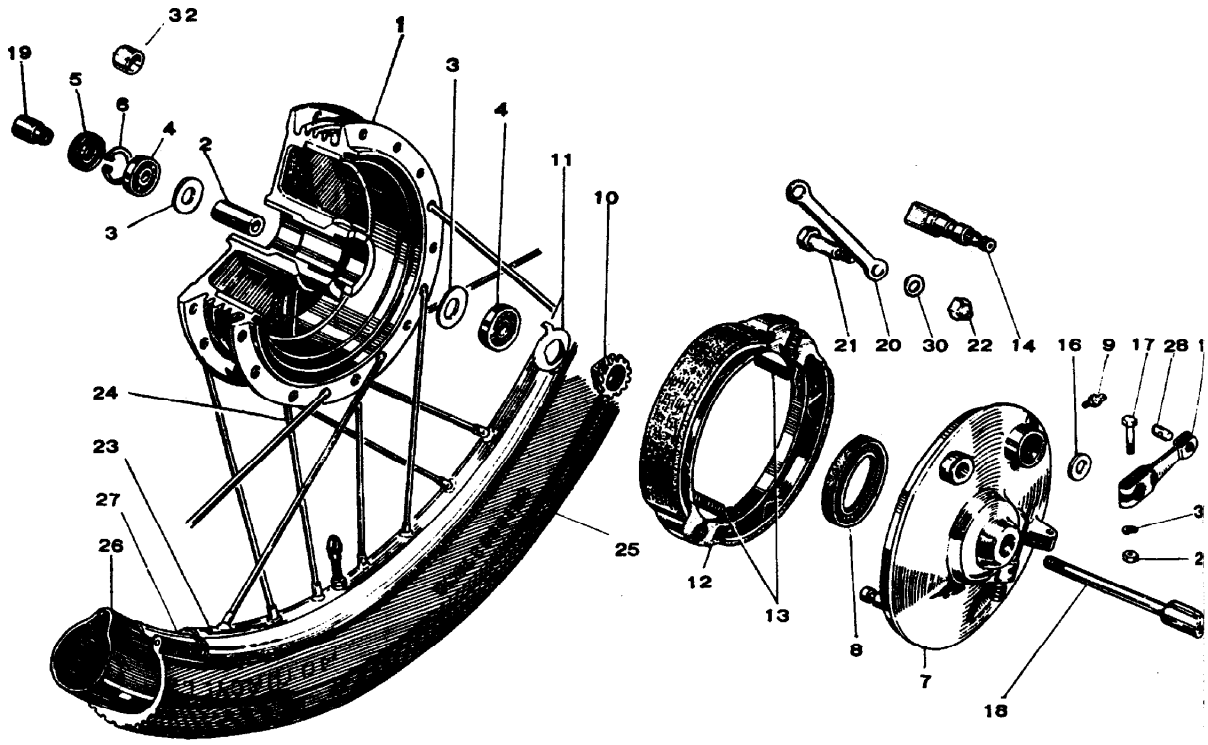


INDEX N O	PART NO.	DESCRIPTION	90cc Without Oil Injection				90cc With Oil Injection				100cc O/I	
			90 STD	90 TR	90 M	90 SP	90 D	90 TR	90 M	90 SP	100 SP	100 TR
26-1	301-5000 <b>EA1-63300)</b>	<b>fuffler</b> assembly	X	X								
	301-5020 <b>EA2-63300)</b>	<b>fuffler</b> assembly				X				X	X	
26-2	301-5030 <b>320=5000</b> <b>EA1-633 13)</b>	<b>fuffler</b> assembly nner pipe	X	X			X	X				
	320-5010 <b>EA2-633 13)</b>	nner pipe				X						
26-3	320-5030	nner pipe					X	X				
26-4	121-0506	6 MM hex bolt	X	X	X		X	X				
26-5	411-0512	6 MM flat washer	X	X	X		X	X				
26-6	351-5030 <b>EA1-63111)</b>	exhaust pipe	X	X			X	X				
	351-5010	exhaust pipe				X				X		
26-7	351-5400	exhaust pipe									X	
26-8	362-5000 <b>EA1-63121)</b>	Lubber joint	X	X		X	X	X		X	X	
26-9	364-5000	ring-rubber joint	X	X		X	X	X		X	X	
26-10	M1-63 122) <b>361-5000</b>	Clamp nut	X	X	X		X	X	X			
26-11	<b>EA1-63 123)</b> <b>361-3201</b>	Clamp nut				X				X		
26-12	GB1-63 123) <b>361-5400</b>	Clamp nut									X	
26-13	<b>363-5000</b> <b>EA1-63 124)</b>	itopper-rubber joint	X	X	X	X	X	X	X	X	X	
26-14	<b>311-0412</b>	2x12 MM screw	X	X	X	X	X	X	X	X	X	
26-15	<b>211-0400</b>	4 MM hex nut	X	X	X	X	X	X	X	X	X	
26-16	<b>142-5000</b> <b>EA1-11412)</b>	Exhaust gasket	X	X	X	X	X	X	X			X
26-17	<b>1142-5400</b>	Exhaust gasket										X
26-18	<b>332-3210</b>	Front protector (Left)							X			X
26-19	<b>332-5010</b>	Front protector (Right)			X							X
26-20	<b>333-5010</b>	Rear protector			X				X			X
26-21	<b>334-5010</b>	Protector bracket (Right)			X							X
26-22	1311-0610	6x10 MM screw			X				X			X
26-23	1411-0613	6 MM plain washer			X				X			X
26-24	<b>311-0606</b>	6x6 MM screw			X				X			X
26-25	3953 1- 102	6 MM screw			X							X
26-26	5351-5040 <b>(EA13-63111)</b>	Exhaust pipe right			X							
26-27	<b>6351-5050</b>	Exhaust pipe left							X			
26-28	6351-5600	Exhaust pipe										X
26-29	6364-5000 <b>(EA1-63122)</b>	Ring-rubber joint			X				X			X
26-30	6362-5000 <b>(EA1-63121)</b>	Rubber joint			X				X			
26-31	<b>03 11-0414</b>	4x14 MM screw			X				X			X
26-32	0211-0400	4 MM hex nut			X				X			X
26-33	6301-5010	Muffler right			X							
26-34	<b>(EA13-63310)</b>	(Up swept)							X			
26-35	6301-5041	Muffler left							X			
26-36		(Up swept)										
26-37	6301-5600	Muffler										X
26-38	6320-5000 <b>(EA1-63313)</b>	Inner pipe			X							
26-39	6320-5020	Inner pipe							X			
26-40	6320-5600	Inner pipe										X
26-41	0121-0506	5x6 MM hex bolt			X				X			X
26-42	0411-0512	5 MM plain washer			X				X			X
26-43	6335-5010	Muffler stay right			X							
26-44	<b>(EA13-63331)</b>											
26-45	6335-502 1	Muffler stay left							X			
26-46	6335-5600	Muffler stay										X
26-47	D111-0614	6x14 MM hex bolt			X				X			X
26-48	0411-0613	6 MM plain washer			X				X			X

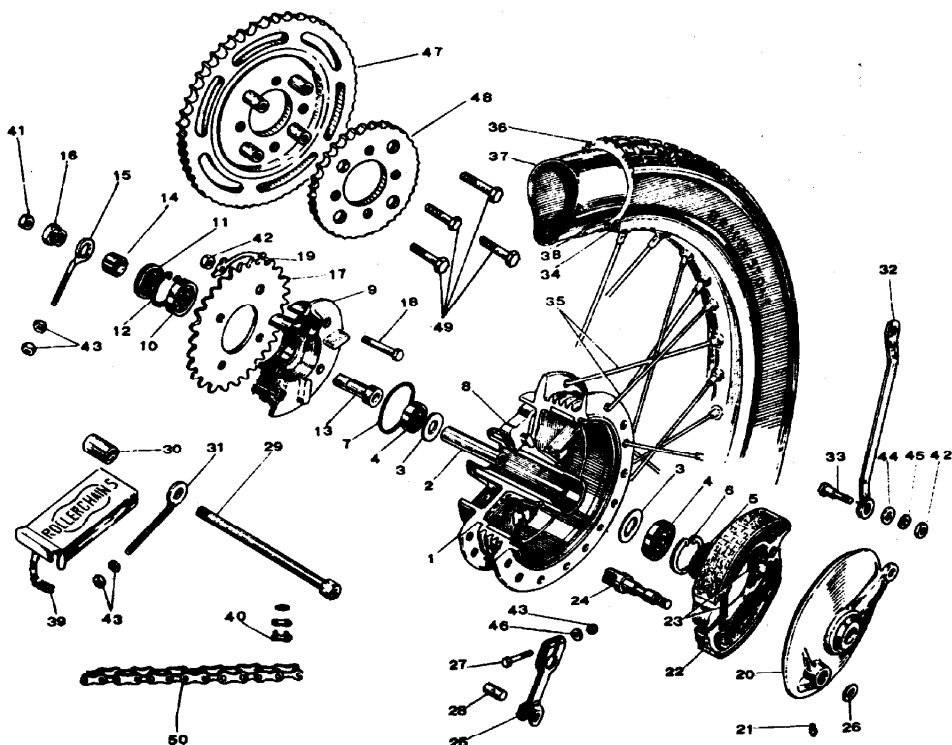
27) TANDEM SEAT - SIDE COVERS



INDEX N O .	PART NO.	DESCRIPTION	90cc Without Oil Injection				90cc With Oil Injection				100cc O/I	
			90 STD	90 TR	90 M	90 SP	90 D	90 TR	90 M	90 SP	100 SP	100 TR
27-1	460-5030 EA1-91100)	Tandem seat	X	X			X	X				
	460-5040	Tandem seat								X		
	430-5030 EA24-64100)	Tandem seat				X						
	460-5400											X
27-2	821-3210-CBK EA1-68121-0B)	Side cover right black	X									
	821-3220-OMF EA1-68121-OM	Side cover right blue		X	X							
	821-5040-CBK EA2-68121-0B)	Side cover right black				X						
	821-5050-CBK	Side cover right black					X					
	821-5050-OMB	Side cover right blue						X	X			
	821-5050-FAR	Side cover right red								X	X	
27-3	811-5030-CBK EA1-68111-0B)	Side cover left black	X			X	X					
	811-5030-OMB EA1-68111-MB	Side cover left blue		X	X			X	X			
	811-3211-OMB	Side cover left blue for left up muffler							X			
	811-5030-FAR	Side cover left, red								X	X	
	811-5600-MB	Side cover left, blue										X
27-4	831-5000 EA1-68112)	<nob-side cover	X	X	X	X						
	831-5010	{nob-side cover					X	X	X	X	X	
	831-9000	Knob-side cover										X
	833-9000	Cover stopper										X
27-5	832-3001 M08633)	Circle-knob	X	X	X	X	X	X	X	X	X	
	815-5010	90SP cover ornament								X		
	815-5030	90 D cover ornament					X					
	815-5040	90 T cover ornament						X				
	815-5050	90 M cover ornament							X			
	815-5400	100 SP cover ornament									X	
	6815-5600	100 TR cover ornament										X
27-6	6410-5020 (EA1-64100)	Single seat			X					X		
	6430-5600	Single seat										X
27-7	6510-5000-MB (EA1-65100)	Carrier assembly, blue			X					X		
27-8	6541-5030 (EA13-91310)	Chrome carrier			X					X		
27-9	0231-0800	8 MM hex nut			X					X		
27-10	0431-0820	8 MM lock washer			X					X		
27-11	0381-0830	8 x 30 MM screw			X					X		
27-12	6548-5010 (EA11-91311)	Brackets	X	X	X		X	X	X	X		
27-13	EA1-91150	Rear seat 90M			X					X		
	6531-5021	Luggage carrier					X	X	X	X		
	6531-3220	Luggage carrier	X	X	X							



INDEX N O .	PART NO .	DESCRIPTION	90cc Without Oil Injection				90cc With Oil Injection				100cc O/I	
			90 STD	90 TR	90 M	90 SP	90 D	90 TR	90 M	90 SP	100 SP	100 TR
28-0	<b>7101-5000</b>	Front wheel	X	X	X	X	X	X	X	X	X	
	<b>7101-5600</b>	Front wheel										X
28-1	<b>7111-5002</b>	Frdnt drum	X	X	X	X	X	X	X	X	X	
	<b>7111-3210</b>	Front drum										X
28-2	<b>7114-5000</b>	Center pipe	X	X	X	X	X	X	X	X	X	
	<b>(EA1-71114)</b>											
	7114-3110	Center pipe										X
28-3	<b>7115-3000</b>	Center pipe support	X	X	X	X	X	X	X	X	X	X
	<b>(MO4119)</b>											
28-4	<b>07-6201-03</b>	Ball bearing	X	X	X	X	X	X	X	X	X	X
	<b>(EA1-71116)</b>											
28-5	<b>09590-104</b>	20-32-S Oil seal	X	X	X	X	X	X	X	X	X	X
	<b>(GA3-71117)</b>											
28-6	<b>EA1-71118</b>	Snap ring	X	X	X	X						
28-7	7130-5002	Panel before 12Q	X	X	X	X						
	<b>7130-5003</b>	Panel after 12Q	X	X	X	X						
	<b>7130-5600</b>	Front panel										X
28-8	09590-105	40-52-8 Oil seal	X	X	X	X	X	X	X	X	X	X
	<b>(GA3-71134)</b>											
28-9	7134-3002	Grease nipple	X	X	X	X	X	X	X	X	X	X
	<b>(MO4137)</b>											
28-10	7148-5001	Speedometer gear	X	X	X	X	X	X	X	X	X	X
	<b>(EA1-71141)</b>											
28-11	7149-3110	Gear connector	X	X	X	X	X	X	X	X	X	X
	<b>(GA3-71142)</b>											
28-12	7140-5000	Brake shoe	X	X	X	X	X	X	X	X	X	
	<b>(EA1-71150)</b>											
	7140-3110	Brake shoe										X
28-13	7115-3110	Spring-brake shoe	X	X	X	X	X	X	X	X	X	X
	<b>(GA3-71161)</b>											
28-14	7151-3110	Brake cam	X	X	X	X	X	X	X	X	X	X
	<b>(GA3-71171)</b>											
28-15	7353-3004	Brake lever	X	X	X	X	X	X	X	X	X	X
	<b>(MO4251)</b>											
28-16	7152-3001	Dust seal	X	X	X	X	X	X	X	X	X	X
	<b>(MO4248)</b>											
28-17	0121-0628	6x28 MM hex bolt	X	X	X	X	X	X	X	X	X	X
28-18	7221-5000	Front wheel axle	X	X	X	X	X	X	X	X	X	X
	<b>(EA1-71181)</b>											
28-19	7226-3110	Axle collar	X	X	X	X	X	X	X	X	X	X
	<b>(GA3-71182)</b>											
28-20	7166-5000	Front torque link	X	X	X	X	X	X	X	X	X	
	<b>(EA1-71191)</b>											
28-21	7167-5000	Torque link bolt	X	X	X	X	X	X	X	X	X	
	<b>(EA1-71192)</b>											
28-22	09525-102	8 MM cap nut	X	X	X	X	X	X	X	X	X	X
28-23	7241-5000	Wheel rim	X	X	X	X	X	X	X	X	X	
	<b>(EA1-71200)</b>											
	7241-5020	Wheel rim										X
28-24	7108-5000	Front spoke set	X	X	X	X	X	X	X	X	X	
	<b>(EA1-71300)</b>											
	7308-5600	Spoke set										X
28-25	-	Front tire 250-17-F.S.	X			X	X			X	X	
	-	Tire 250-17-T.R.		X				X				
	-	Tire 250-17-HK			X				X			
	-	Tire 300-17-FS										X
28-26	-	Tube 250 x 17	X	X	X	X	X	X	X	X	X	
		Tube 300 x 17										X
28-27	7353-3000	Rim band	X	X	X	X	X	X	X	X	X	X
	<b>(MO4 193)</b>											
28-28	7361-3003	Brake arm pin	X	X	X	X	X	X	X	X	X	X
	<b>(MO4252)</b>											
28-29	0211-0600	6 MM hex nut	X	X	X	X	X	X	X	X	X	X
28-30	0431-0820	8 MM lock washer	X	X	X	X	X	X	X	X	X	X
28-31	0431-0615	6 MM lock washer	X	X	X	X	X	X	X	X	X	X
28-32	7228-3110	Dust seal	X	X	X	X	X	X	X	X	X	X
	7191-5000	Speedo gear set	X	X	X	X	X	X	X	X	X	X



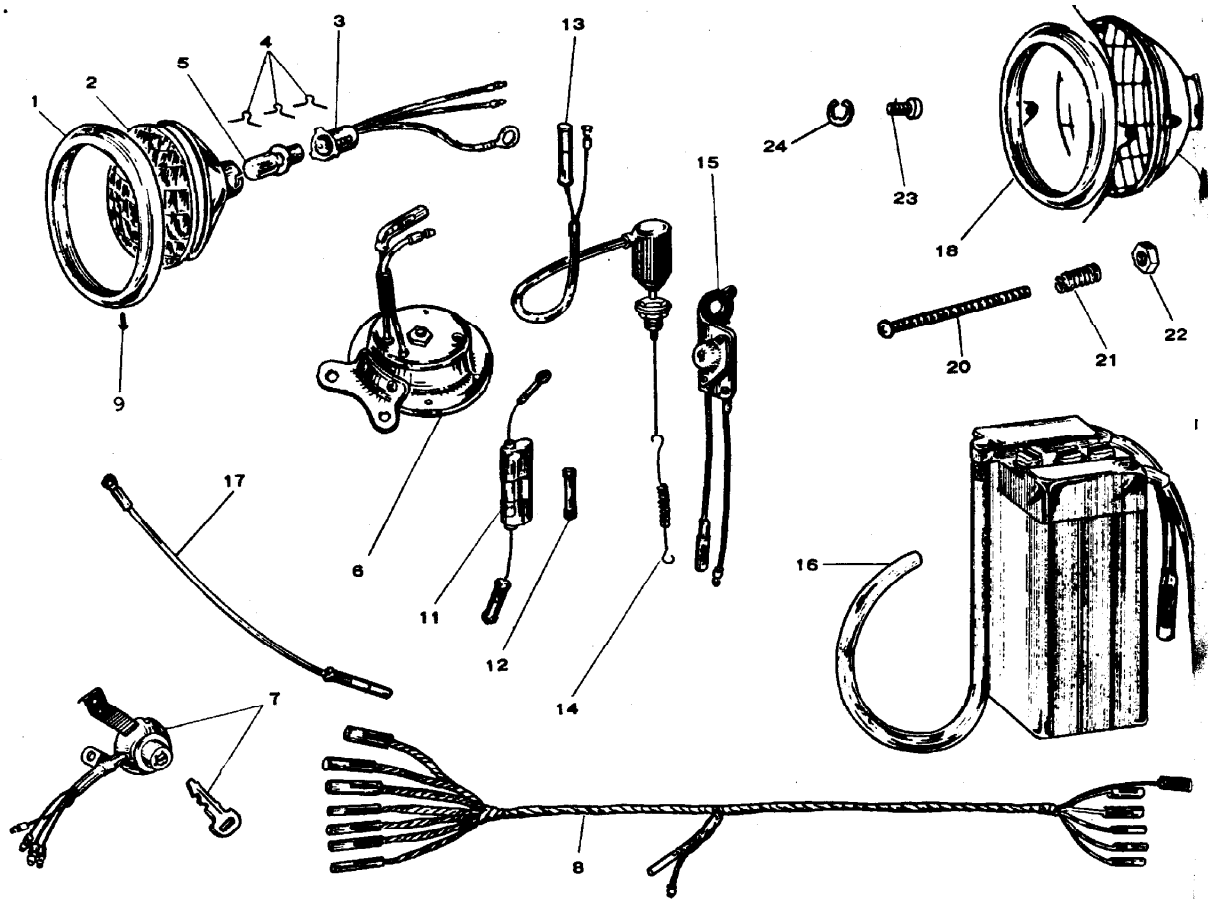
## 29) REAR WHEEL

INDEX N O.	PART NO.	DESCRIPTION	90cc Without Oil Injection				90cc With Oil Injection			100cc O/I	
			90 STD	90 TR	90 M	90 SP	90 D	90 FR	90 M	90 SP	100 SP
29-0	7101-5000 (EA1-72020)	Rear wheel assembly	X	X	X	X	X	X	X	X	
29-1	7101-5600 311-5001 EA1-72110	Rear wheel assembly Brake drum	X	X	X	X	X	X	X	X	X
29-2	311-3111 73 14-5000 EA1-72114	Brake drum Center pipe	X	X	X	X	X	X	X	X	
29-3	7314-3110 7115-3000 (MO4119)	Center pipe Support - center pipe	X	X	X	X	X	X	X	X	X
29-4	7-6201-03	Ball bearing	X	X	X	X	X	X	X	X	X
29-5	99590-106 (GA3-72117)	17-32-5 oil seal	X	X	X	X	X	X	X	X	X
29-6	EA1-71118	Snap ring	X	X	X	X					
29-7	39566-101 (GA3-72118)	40 0 ring	X	X	X	X	X	X	X	X	X
29-8	7319-3111	Damper rubber	X	X	X	X	X	X	X	X	X
29-9	7371-3110 (GA3-72131)	Drive flange	X	X	X	X	X	X	X	X	
29-10	7371-3200 07-6203-03 (GA3-72132)	Drive flange Ball bearing	X	X	X	X	X	X	X	X	X
29-11	09590-107 (GA3-72133)	23-40-5 oil seal	X	X	X	X	X	X	X	X	X

## 29) REAR WHEEL

INDEX NO.	PART NO.	DESCRIPTION	90cc Without Oil Injection				90cc With Oil Injection				100cc O/I	
			90 STD	90 TR	90 M	90 SP	90 D	90 TR	90 M	90 SP	100 SP	100 TR
			29-12	19507-101 GA3-72134	40 Snap ring	X	X	X	X	X	X	X
29-13	376-5001 EA1-72141)	Drive flange collar	X	X	X	X	X	X	X	X	X	
29-14	376-3111 377-5000 EA1-72142)	Drive flange collar Oil seal collar	X	X	X	X	X	X	X	X	X	X
29-15	377-3110 1861-3110 1-3-72143)	Oil seal collar R chain adjuster	X	X	X	X	X	X	X	X	X	X
29-16	379-3111 GA3-72144)	Flange collar nut	X	X	X	X	X	X	X	X	X	X
29-17	381-5000 EA1-72151)	Rear sprocket 34T	X			X	X			X	X	
29-18	39511-112 GA3-72153)	8x33 MM hex bolt	X			X	X			X	X	
29-19	3431-0820	8 MM lock washer	X			X	X			X	X	
29-20	7331-5001 EA1-72160)	Brake panel	X	X	X	X	X	X	X	X	X	
29-21	1331-3111 1134-3002 MO4137)	Brake panel Grease nipple	X	X	X	X	X	X	X	X	X	X
29-22	7140-5000 EA1-71150)	Brake shoe	X	X	X	X	X	X	X	X	X	
29-23	7140-3110 7145-3110 GA3-71161)	Brake shoe Brake shoe spring	X	X	X	X	X	X	X	X	X	X
29-24	7351-3110 GA3-72171)	Rear brake cam	X	X	X	X	X	X	X	X	X	X
29-25	7353-3004 MO4251)	Brake lever	X	X	X	X	X	X	X	X	X	X
29-26	7152-3001 MO4248)	Packing-brake lever	X	X	X	X	X	X	X	X	X	X
29-27	0121-0628	6x28 MM hex bolt	X	X	X	X	X	X	X	X	X	X
29-28	7361-3003 MO4252)	Brake arm pin	X	X	X	X	X	X	X	X	X	X
29-29	7421-3110 GA3-72181)	Rear axle	X	X	X	X	X	X	X	X	X	X
29-30	7426-3110 GA3-72182)	Rear axle collar	X	X	X	X	X	X	X	X	X	X
29-31	4861-3002 MO3181)	L chain adjuster	X	X	X	X	X	X	X	X	X	X
29-32	7366-5000 EA1-72191)	Tension bar	X	X	X	X	X	X	X	X	X	X
29-33	7367-3001 MO4259)	Bolt-tension bar	X	X	X	X	X	X	X	X	X	X
29-34	7241-5000 EA1-71200)	Wheel rim	X	X	X	X	X	X	X	X	X	
29-35	7241-5020 7308-5000 EA1-72300)	Wheel rim Rear spoke set	X	X	X	X	X	X	X	X	X	X
29-36	7308-5600	Rear spoke set	X			X	X			X	X	X
29-37	7253-3000 MO4193)	Rear tire 250-17 RS Rear tire 250-17 TR Rear tire 250-17 HK Rear tire 300-17 RS	X	X	X	X	X	X	X	X	X	X
29-38	7501-5000 EA1-73000)	Tube 250-17 Tube 300-17 Rim band	X	X	X	X	X	X	X	X	X	X
29-39	7501-5030	Roller chain	X	X	X	X	X	X	X	X	X	
29-40	7520-5000 EA1-73200)	Roller chain Chain connector	X	X	X	X	X	X	X	X	X	X
29-41	7422-3110 GA3-72184)	Axle nut	X	X	X	X	X	X	X	X	X	X
29-42	0231-0800	8 MM hex nut	X	X	X	X	X	X	X	X	X	X
29-43	0231-0600	6 MM hex nut	X	X	X	X	X	X	X	X	X	X
29-44	0411-0818	8 MM flat washer	X	X	X	X	X	X	X	X	X	X
29-45	3431-0820	8 MM lock washer	X	X	X	X	X	X	X	X	X	X
29-46	3431-0615	6 MM lock washer	X	X	X	X	X	X	X	X	X	X
29-47	7411-5010 EA1-72151)	Sprocket-quick change 47 tooth	X	X				X				X
29-48	7411-5020 EA13-72150)	Sprocket-quick change 64 tooth			X				X			
29-49	1416-5010 EA1-72151)	Sprocket 34 tooth		X	X			X	X			X
29-50	1123-0816	8x 16 MM hex bolt		X	X			X	X			X
29-51	-502-5010 EA1-73000)	Chain extension		X				X				X
29-52	7502-5020 EA13-73000)	Chain extension			X				X			

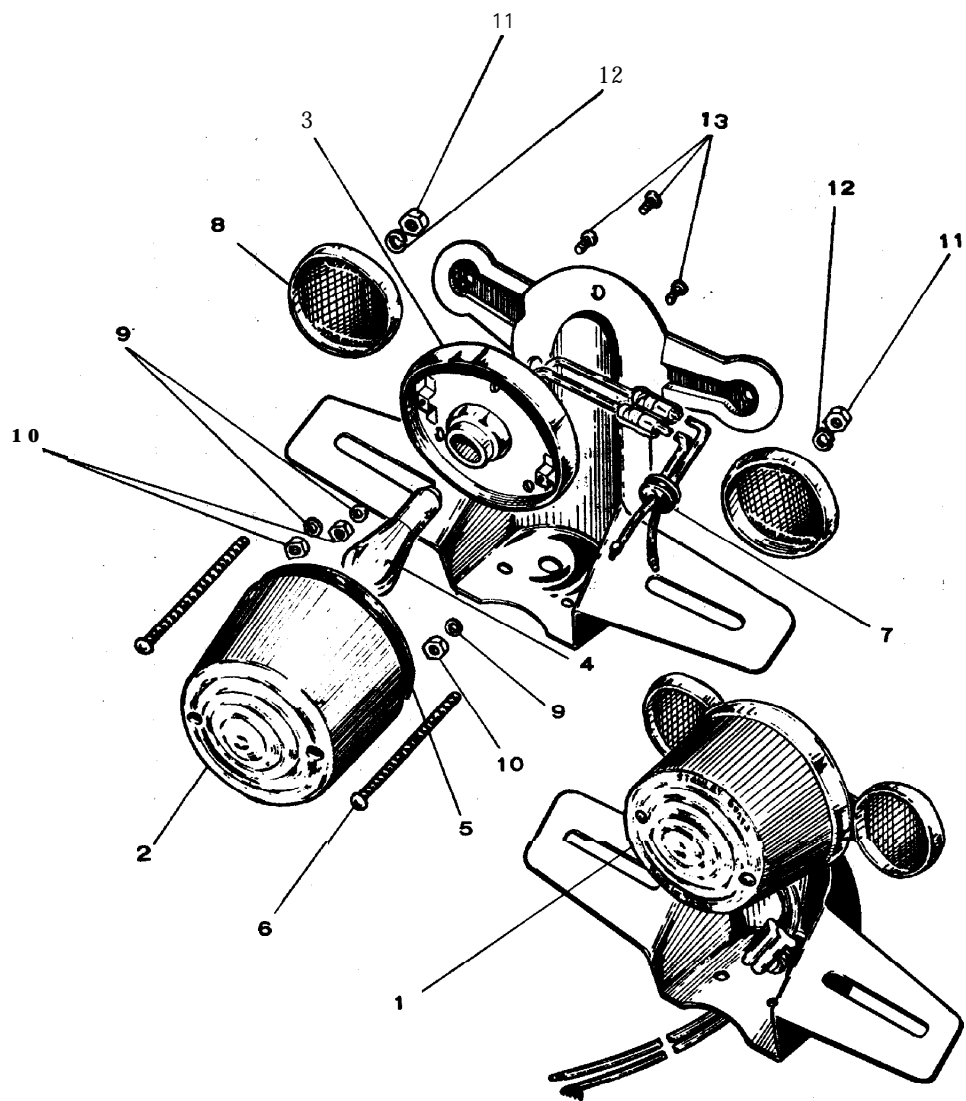
30) HEADLIGHT - MAIN SWITCH - WIRE HARNESS - BATTERY



30) HEADLIGHT-MAIN SWITCH  
W-IRE HARNESS-BATTERY

INDEX N O	PART NO.	DESCRIPTION	90cc Without Oil Injection				90cc With Oil Injection				100cc O/I	
			90 STD	90 TR	90 M	90 SP	90 D	90 TR	90 M	90 SP	100 SP	100 TR
		<u>PARTS FOR PLASTIC</u>										
		<u>HEAD COVER</u>										
30-0	3102-5000 (EA1-81200)	Headlight assembly	X	X	X	X						
30-1	3140-5000 (EA1-81210)	Headlight rim	X	X	X	X						
30-2	3150-5000 (EA1-81220)	Lens	X	X	X	X						
30-3	3160-5000 (EA1-82130)	Socket	X	X	X	X						
30-4	3160-5020 8172-5000 (EA1-81241)	Socket Lens holder	X X	X X	X X	X X	X	X	X	X	X	X
30-5	8171-5000 (EA1-81242)	Bulb	X	X	X	X	X	X	X	X	X	X
30-6	8402-5000 (EA1-85110)	<b>Horn</b> assembly	X	X	X	X	X	X	X	X	X	
30-7	8402-5600 8601-5000 (EA1-86100)	Horn assembly Main switch	X	X	X	X						X
30-8	8601-5020 8601-5600 8810-5010 (EAE-88110)	Ma in switch Main switch Wire harness					X	X	X	X	X	X
30-11	8810-5600 8802-5000 (EA1-88300)	Wire harness Fuse assembly	X	X	X	X	X	X	X	X	X	X
30-12	8861-3000 (M06811)	Fuse	X	X	X	X	X	X	X	X	X	X
30-13	8650-5000 (EA1-89100)	Stop switch	X	X	X	X	X	X	X	X	X	X
30-14	8661-5000 (EA1-89121)	Spring stop switch	X	X	X	X						
30-15	8661-5001 8661-5600 8702-5000 (EA1-89510)	Spring-stop switch Spring-stop switch Rectifier	X	X	X	X	X	X	X	X	X	X
30-16	8701-5010	Battery	X	X	X	X	X	X	X	X	X	X
30-17	8834-5000 (EA1-81311)	Earth wire	X	X	X	X	X	X	X	X	X	X
30-9	0342-0510	5x10 MM rim screw	X	X	X	X	X	X	X	X	X	X
		<u>PARTS FOR METAL</u>										
		<u>HEAD COVER</u>										
30	8102-5020	Headlight assembly	X	X	X	X	X	X	X	X	X	X
30-18	8140-5010 -81210)	Headlight rim	X	X	X	X	X	X	X	X	X	X
30-19	8150-5020 (EAE-81220)	Headlight lens	X	X	X	X	X	X	X	X	X	X
30-20	8176-3010	Adjusting screw	X	X	X	X	X	X	X	X	X	X
30-21	8174-8000	Spring adj screw	X	X	X	X	X	X	X	X	X	X
30-22	8175-8000	Nut adj screw	X	X	X	X	X	X	X	X	X	X
30-23	8177-8000	Pivot screw-lens	X	X	X	X	X	X	X	X	X	X
30-24	8173-8000	Clip-pivot <b>screw</b>	X	X	X	X	X	X	X	X	X	X

3 1) TAILLIGHT

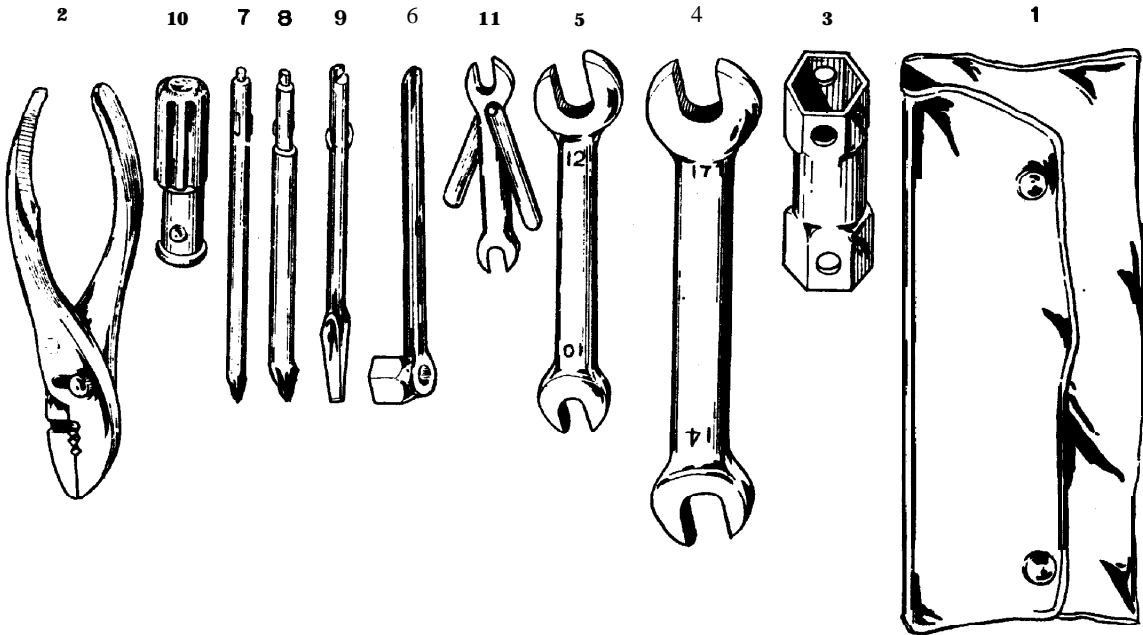


3 1) TAIL LIGHT

INDEX N O.	PART NO.	DESCRIPTION	90cc Without Oil Injection				90cc With Oil Injection				100cc O/I	
			90 STD	90 TR	90 M	90 SP	90 D	90 TR	90 M	90 SP	100 SP	100 TR
			1-1	3205-5011	Tail light assembly	X	X	X		X	X	X
	3205-502 1	Tail light assembly				X						
1-2	8251-3020	Lens (round type)	X	X	X	X						
	8251-8000	Lens (oblong type)	X	X	X	X	X	X	X	X	X	X
1-3	9240-5010	Socket assembly	X	X	X	X						
1-4	8252-303 1	Tail lamp bulb	X	X	X	X	X	X	X	X	X	X
1-5	8253-3020	Tail lens packing (Round)	X	X	X	X						
	8253-8000	Tail lens. packing (Oblong)	X	X	X	X	X	X	X	X	X	X
1-6	0341-0355	3 x 55 lens screw (Round type)	X	X	X	X						
	0372-033 0	3x30 lens screw (Oblong type)	X	X	X	X	X	X	X	X	X	X
1-7	8256-3010	Grommet	X	X	X	X	X	X	X	X	X	X
1-8	8203-3010	Reflector-assembly	X	X	X	X						
1-9	0411-0410	4 MM flat washer	X	X	X	X	X	X	X	X	X	X
1-10	02 1 1-0400	4 MM hex nut	X	X	X	X	X	X	X	X	X	X
1-11	022 1-0500	5 MM hex nut	X	X	X	X	X	X	X	X	X	X
1-12	043 1-0513	5 MM lock washer	X	X	X	X	X	X	X	X	X	X
1-13	0361-0410	4x10 MM screw	X	X	X	X	X	X	X	X	X	X
		<b>MOUNTING HARDWARE</b>										
	0111-0614	6x14 MM hex bolt	X	X	X	X	X	X	X	X	X	X
	023 1-0600	6 MM hex nut	X	X	X	X	X	X	X	X	X	X
	0451-0600	6 MM lock washer	X	X	X	X	X	X	X	X	X	X
		<b>ACCESSORIES</b>										
	653 1-502 1	Sport carrier					X	X	X			
	653 1-3220	Sport carrier	X	X	X							
	3443-32 10	License plate support	X	X	X	X	X	X	X	X	X	X
	3452-32 10	Rubber plug-support	X	X	X	X	X	X	X	X	X	X

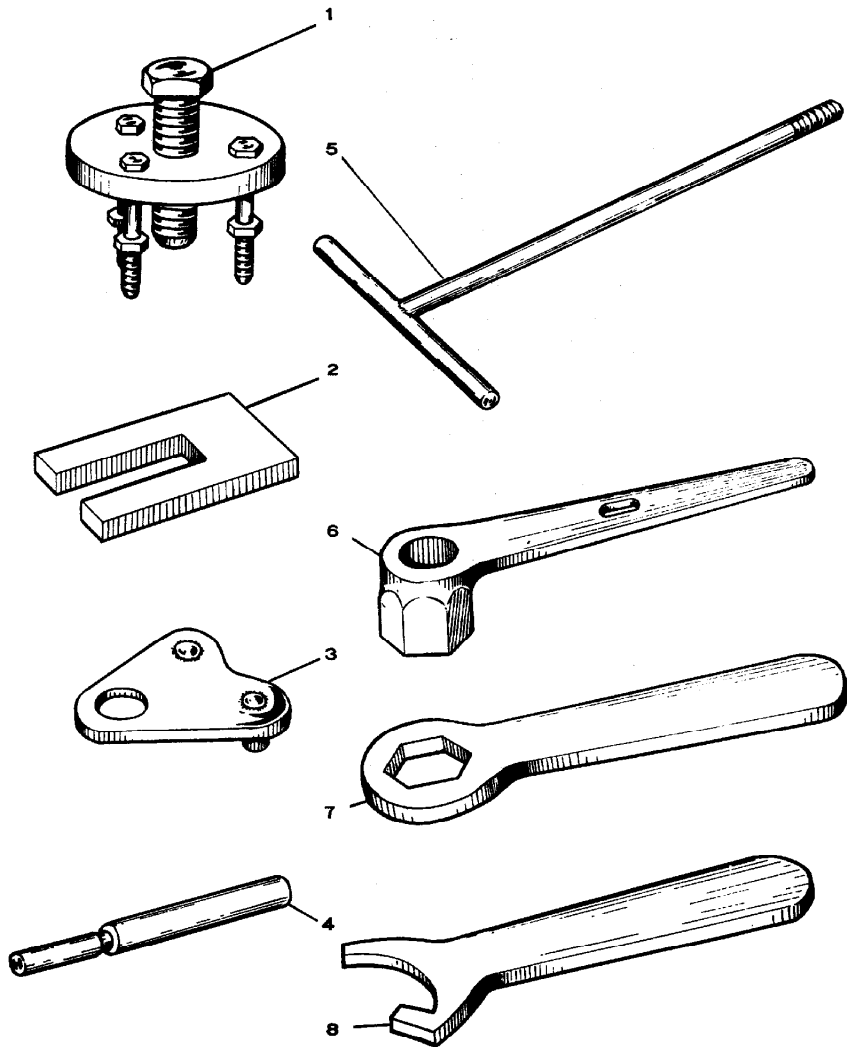
32) SERVICE TOOLS

INDEX N O	PART NO.	DESCRIPTION	90cc Without Oil Injection				90cc With Oil Injection				100cc O/I	
			90 STD	90 TR	90 M	90 SP	90 D	90 TR	90 M	90 SP	100 SP	100 TR
32-0	9201-5000	Tool set	X	X	X	X	X	X	X	X	X	X
32-1	9211-5000	Tool bag	X	X	X	X	X	X	X	X	X	X
32-2	9225-5000	Pliers	X	X	X	X	X	X	X	X	X	X
32-3	92 18-5000	Box spanner	X	X	X	X	X	X	X	X	X	X
32-4	92 17-5000	14 x 17 open end wrench	X	X	X	X	X	X	X	X	X	X
32-5	92 15-5000	10 x 12 open end wrench	X	X	X	X	X	X	X	X	X	X
32-6	92 13-5000	10 MM box wrench	X	X	X	X	X	X	X	X	X	X
32-7	9226-5000	Small <b>phillips</b> drive	X	X	X	X	X	X	X	X	X	X
32-8	MO87 16	Large <b>phillips</b> drive	X	X	X	X	X	X	X	X	X	X
32-9	9228-5000	Straight screw driver	X	X	X	X	X	X	X	X	X	X
32-10	923 1-3000	Driver handle	X	X	X	X	X	X	X	X	X	X
32-11	9212-3001	8 x 9 open end wrench	X	X	X	X	X	X	X	X	X	X



33) SPECIAL TOOLS

INDEX N.O.	PART NO.	DESCRIPTION	90cc Without Oil Injection				90cc With Oil Injection				100cc O/I	
			90 TD	90 TR	90 M	90 SP	90 D	90 TR	90 M	90 SP	100 SP	TR
33-0	9300-5010	Special tool set	X	X	X	X	X	X	X	X	x	
33-1	9375-5000	Flywheel puller	X	X	X	X	X	X	X	X		
33-2	EA1-99114	Piston seat	X	X	X	X	X	X	X	X	x	x
33-3	9374-5000	Sprocket stopper	X	X	X	X	X	X	X	X	x	
33-4	9376-5010	Piston pin punch	X	X	X	X	X	X	X	X		
33-5	EA1-99112	Front fork tool	X	X	X	X	X	X	X	X	x	x
33-6	9213-5000	10 MM box wrench	X	X	X	X	X	X	X	X	x	
33-7	EA1-99111	35 MM wrench	X	X	X	X	X	X	X	X		
33-8	9373-5000	Exhaust pipe tool	X	X	X	X	X	X	X	X	x	x
33-9	9211-5000	Tool bag	X	X	X	X	X	X	X	X	x	



**BS 100 RACER PARTS**

<u>PART NO.</u>	<u>DESCRIPTION</u>
1111-5410	Cylinder head
<b>1121-5410</b>	<b>Cylinder</b>
<b>1141-5410</b>	<b>Cylinder</b> head gasket
1301-5410	Crankshaft complete
1305-5400	<b>Piston ring</b> set
1341-5410	Piston
1381-5400	<b>Piston pin</b>
1412-8000	Rotary valve
1431-5040	<b>Rotary</b> valve <b>cover</b>
1600-5410	22 M/M carburetor
1690-5410	<b>Main jet set</b> 170-190-200
2161-5410	<b>R</b> crankcase <b>cover</b>
2175-5410	Carburetor cap <b>adjuster</b>
<b>2176-5410</b>	carburetor cover
2177-5410	<b>Carburetor</b> cap
<b>2185-5410</b>	Carburetor cover gasket
2189-5410	Carburetor cap gasket
<b>2484-5010</b>	<b>Drive</b> sprocket <b>12T</b>
2484-5410	<b>Drive</b> sprocket 13T
2484-5000	<b>Drive</b> sprocket <b>14T</b>
2484-5400	<b>Drive</b> sprocket <b>15T</b>
3353-3001	Battery band
<b>3726-5410</b>	L footrest spring
3727-5410	<b>R footrest</b> spring
<b>3810-5410</b>	Brake pedal complete
<b>3823-5410</b>	Brake pedal rubber
4161-5010	<b>Upper bridge</b>
<b>4162-5010</b>	Handlebar holder
4410-5010 MS	Front feeder
4423-5010	Fender stay A
<b>4424-5010</b>	Feeder stay B
<b>4810-5410 CBK</b>	Rear fork
6176-5030	<b>Throttle</b> cable
6181-5020	Front brake cable
6186-5410	Clutch cable
<b>6211-5020</b>	Cleaner element
6232-5010	Cover element
6233-5010	Cleaner <b>case</b> cover
6310-5410	Tuned muffler
6430-5020	Racer seat
7108-5020	<b>Spoke set F &amp; R</b>
7241-5020	Wheel <b>rim</b> F 6 R
7381-5040	Rear sprocket <b>38-40-42-44-46-48</b> tooth
8501-3000	<b>Ignition</b> coil
<b>EA22-31433</b>	Coil bracket
<b>EA22-86100</b>	<b>Ignition</b> switch
<b>EA22-31434</b>	<b>Switch</b> bracket
<b>EA22-31121</b>	Battery case

**STANDARD PRODUCTION PARTS**

<u>PART NO.</u>	<u>DESCRIPTION</u>
3650-5000	Side <b>stand</b>
451 1-8000	Handle bar
<b>5110-3200-CUR</b>	Fuel tank
6125-8000	Left lever holder
6122-8000	Clutch lever
6123-5010	Left <b>grip</b> rubber
6126-8000	Cable <b>adjuster</b>
6127-8000	Adjuster lock nut
6107-8030	Right case <b>throttle</b>
6151-8010	<b>Right</b> case cover
6154-8000	Throttle pipe
6153-5010	Right <b>grip</b> rubber
6149-8000	Right lever holder
6152-8000	Front brake lever
8701-3002	<b>Battery</b> 12 volt Tire front and rear 300 x 17FS

BRIDGESTONE 90-100 SERIES

	<u>COLOR</u>	<u>MUFFLER</u>	<u>ENGINE NUMBER</u>
90 Standard	Black	Down	12
90 Trail	Blue	Down	12
90 Mountain	Blue	Up-right	12
<b>90</b> sport	Black	Down	14
90 Deluxe 01	Black	Down	17
90 Trail 01	Blue	Down	17
90 Mountain 01	Blue	Up-left	17
90 Sport 01	Red	Down	18
100 sport 01	Red	Down	20
100 Trail 01 Pipe Frame	Blue	Up-left	20
90 <b>SS</b> Same as 90 Standard except 90 Mountain up-muffler and 90 Sport front fender	Black	Up-left	12

## Did You Know?

...That besides carrying genuine replacement parts for all Fox minibicycles, snowmobiles, go-karts and bicycles, we also stock ALL PARTS for:

1. Speedway Products of Mansfield, Ohio
2. A.T.V. Sportscycles of Lewisburg, PA
3. Sportstyl, Inc. of Lewistown, PA
4. Bridgestone-Zundapp, Chibi, Tora, Taka, & M.C.B. Motorcycles imported by Rockford Motors, Rockford, IL
5. Allsport/Stein Minibicycles, Three Wheelers, & Boa Ski of Norwalk, OH
6. Bronco Recreational Vehicles of Cornwell Heights, PA
7. Tas: generators, drills, augers, brushcutters, pumps, outboard and bicycle engines
8. Engine parts for Sachs, Hodaka, Fuji, Garelli, Fantic, Morini Franco, Motori Minarelli, & Tas